

Software

For CN9300, CN9400 and CN9500 Series Controllers

CN9-SW
Starts at
\$159

Software for Windows 95,
98, NT, or XP

- ✓ **Communications Software Designed for Either RS232 or RS485**
- ✓ **Remote Setpoint Adjustment**
- ✓ **Instrument Configuration**
- ✓ **Settings Saved to File**
- ✓ **Instrument Program Cloning**
- ✓ **Logging and Charting**
- ✓ **Log-On Change Feature**
- ✓ **Real-Time and Historical Mode with Zoom Facility**
- ✓ **Live Display**
- ✓ **Password Security**
- ✓ **Print Options**
- ✓ **Software Can Support Up to 128 CN9300, CN9400 or CN9500 Controllers**

Hardware Requirements

- ✓ **Pentium Processor with a Minimum of 16 Meg of RAM**
- ✓ **A Minimum of 20 MB Free Hard Disk Space is Recommended**
- ✓ **Graphic Display Adaptor Capable of Displaying 256 Colors (VGA)**
- ✓ **Serial Port for Single RS232 Instrument (or RS485 Adaptor for Multiple Instruments)**
- ✓ **MS Mouse and Keyboard**
- ✓ **CN9300, CN9400, CN9500 Fitted with RS232 or RS485 Communications**

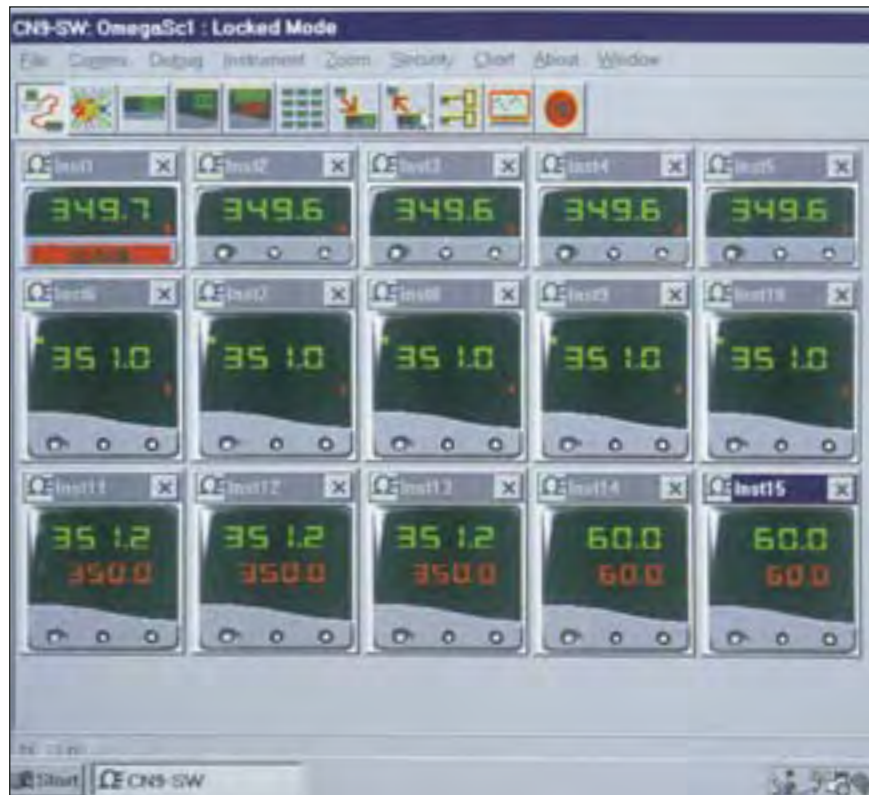
1/16 DIN
CN9300



shown smaller than actual size

The CN9-SW software is designed to interface with the CN9300, CN9400 and CN9500 Series controllers with optional communication hardware. The CN9-SW takes up approximately 1 MB. The size is dependent on the number of controllers and the frequency that they are being logged. A very approximate figure is per reading: 12 bytes date/time plus 4 bytes for each instrument being logged. Designed for use on laptops or PC's, this new development provides the user with:

- Time saving benefit and convenience of remotely configuring and adjusting units.
- Saving and retrieving settings to and from files.
- Cloning settings to other instruments.
- Highly flexible logging and "real time" charting capability for providing hard copy QA records for ISO-9000 and other management purposes.



Screen displaying alarm condition on instrument 1.
Software alarms provide a screen indication if the measured value falls below the low alarm and/or rises above the high alarm settings.

The CN9-SW software is a powerful process development tool for the OEM customer or process engineer. With compatible modems and PC computers, remote site supervisory control and data acquisition can take place to facilitate periodic or continuous monitoring and troubleshooting.

Data is stored to file in a tamper resistant format to ensure the integrity of reports for quality monitoring requirements. Build your own multi-loop system with the CN9300/CN9400/CN9500 series controllers and CN9-SW software. Allows both local and remote adjustment. The CN9-SW software can be used as a production tool for the OEM. Downloading menu settings to controllers during production saves time and eliminates errors.

Screen depicting the setup of the cloning function for multiple controllers. When a satisfactory instrument configuration has been achieved, these settings can be cloned to other instruments on the network or saved to a file for later use.



1/32 DIN
CN9500

Shown smaller than actual size.

Molded transition joint thermocouple probe
KTSS-316G-12, \$19.
See page A-83.

AVAILABLE FOR FAST DELIVERY!

To Order (Specify Model Number)

Model No.	Price	Description
CN9-SW	\$159	Software
CN9-SW-GRAFIX	299	Software*

Ordering Example: CN9-SW, software for CN9300, CN9400, CN9500 Series Controller, \$159.

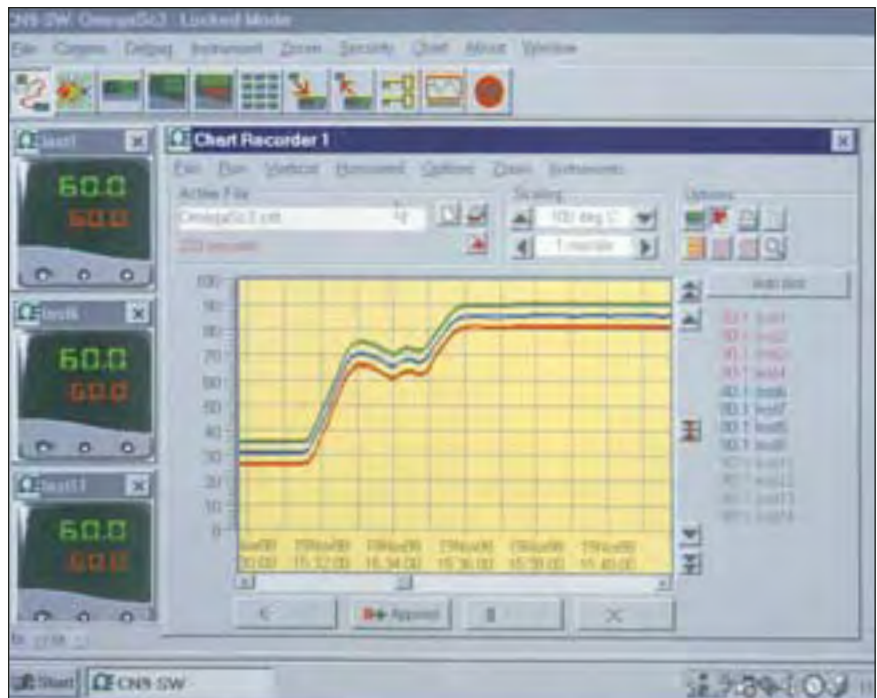


1/16 DIN
CN9400

Shown smaller than actual size.

Sample of graph displaying "real-time charting." Software is capable of logging readings from up to 128 instruments which it stores in data files. The data can be exported into text files in C.S.V. (Comma Separated Variable) format. In addition, up to 12 controllers can be displayed on a single chart, or individual charts can be set up for each instrument. Virtual full color chart recorder can log process variables such as: °C, °F, Bar, PSI, pH, or rH. User definable engineering unit "Set" can be selected on the controller to log other process variables.

* CN9-SW-GRAFIX includes the CN9-SW features plus supports ramp/soak profiles of the CN9600 controllers with graphic program building, dynamic data exchange, and enhanced trending/charting. Network and OPC compatible client/server software available on special request.



For Additional Controllers and Indicators, See Section M



omega.co.uk[®]

Your One-Stop Source for Process Measurement and Control!

Freephone 0800 488 488 | International +44(0) 161 777 6622 | Fax +44(0) 161 777 6622 | Sales@omega.co.uk

www.omega.co.uk



UNITED STATES

www.omega.com

1-800-TC-OMEGA
Stamford, CT.

UNITED KINGDOM

www.omega.co.uk

Manchester, England
0800-488-488
+44-(0)161-777-6611

CANADA

www.omega.ca

Laval(Quebec)
1-800-TC-OMEGA

FRANCE

www.omega.fr

0800-466-342

GERMANY

www.omega.de

Deckenfronn, Germany
0800-8266342

BENELUX

www.omega.nl

0800-099-33-44



More than 100,000 Products Available!

• Temperature

Calibrators, Connectors, General Test and Measurement Instruments, Handheld Instruments for Temperature Measurement, Ice Point References, Indicating Labels, Crayons, Cements and Lacquers, Infrared Temperature Measurement Instruments, Recorders, Relative Humidity Measurement Instruments, PT100 Probes, PT100 Elements, Temperature & Process Meters, Timers and Counters, Temperature and Process Controllers and Power Switching Devices, Thermistor Elements, Probes and Assemblies, Thermocouples, Thermowells and Head and Well Assemblies, Transmitters, Thermocouple Wire, RTD Probes

• Flow and Level

Air Velocity Indicators, Doppler Flowmeters, Level Measurement, Magnetic Flowmeters, Mass Flowmeters, Pitot Tubes, Pumps, Rotameters, Turbine and Paddle Wheel Flowmeters, Ultrasonic Flowmeters, Valves, Variable Area Flowmeters, Vortex Shedding Flowmeters

• pH and Conductivity

Conductivity Instrumentation, Dissolved Oxygen Instrumentation, Environmental Instrumentation, pH Electrodes and Instruments, Water and Soil Analysis Instrumentation

• Data Acquisition

Communication Products and Converters, Data Acquisition and Analysis Software, Data Loggers Plug-in Cards, Signal Conditioners, USB, RS232, RS485, Ethernet and Parallel Port Data Acquisition Systems, Wireless Transmitters and Receivers

• Pressure, Strain and Force

Displacement Transducers, Dynamic Measurement Force Sensors, Instrumentation for Pressure and Strain Measurements, Load Cells, Pressure Gauges, Pressure Reference Section, Pressure Switches, Pressure Transducers, Proximity Transducers, Regulators, Pressure Transmitters, Strain Gauges, Torque Transducers, Valves

• Heaters

Band Heaters, Cartridge Heaters, Circulation Heaters, Comfort Heaters, Controllers, Meters and Switching Devices, Flexible Heaters, General Test and Measurement Instruments, Heater Hook-up Wire, Heating Cable Systems, Immersion Heaters, Process Air and Duct, Heaters, Radiant Heaters, Strip Heaters, Tubular Heaters