

DIAPHRAGM PRESSURE SEALS TO ENSURE PROTECTION AND MEDIA COMPATIBILITY

Seals
Start at
\$280



Diaphragm seals, shown with PGH-45L-200, process gauge, start at \$356.



- ✓ Protects Pressure Instrumentation from Corrosive or Viscous Fluids, Clogging, and In-Line Freezing of the Process Media
- ✓ Glycerine Fill Fluid is Standard, with Optional Fill Fluids Available
- ✓ Displacement of the Liquid Fill in the Pressure Seal Through Movement of the Diaphragm Transmits Process Pressure Directly to the Pressure Instrumentation

OMEGA® diaphragm pressure seals protect sensitive pressure instrumentation from the damaging effects of corrosives, slurries, or viscous fluids. A variety of designs and styles is available to suit individual application requirements.

100 Series

Distinguished by its 3-part design, the 100 Series includes a PTFE coated diaphragm capsule that threads into the top housing, ensuring positive sealing at all surfaces and minimizing fluid leakage. The diaphragm capsule can be replaced without replacing the top housing. Continuous duty is assured; should the sensor be removed from the diaphragm seal, the process fluid is prevented from escaping. Easy cleaning and inspection of the diaphragm can be done during shutdown by detaching the top and bottom housings.

This design eliminates the need to refill the seal or recalibrate the instrument when the top and bottom housings are separated. A FKM O-ring, compatible with all standard fill fluids, and a PTFE backup ring, make a seal between the diaphragm capsule and the top housing. The diaphragm is PTFE coated to provide an integral gasket, thus ensuring a leakproof connection between the diaphragm and bottom housing. The 100 Series consists of a diaphragm capsule with a corrugated, metallic diaphragm edge welded to a sturdy backup plate that threads into the top housing. Once secured, the top housing can be bolted to the bottom housing. The bottom housing has a standard ½ NPT fitting that easily threads to the process piping.

102 Series

Virtually identical to the 100 Series in both performance and design, the 102 Series includes a standard #150 raised face flange in place of a threaded female NPT process fitting. For more rugged applications, an optional #300 raised face flange is also available.

202 Series

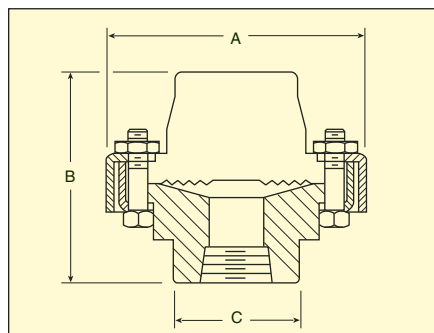
The 202 Series diaphragm seal features a bonded PTFE diaphragm and a PTFE #150 raised face flange. This all-PTFE wetted construction provides ruggedness and maximum corrosion resistance to acids, caustics, alkalis, ketones, hydrocarbons, and alcohols. In the new 202 design, the PTFE diaphragm is bonded to the top housing, allowing the top housing and instrument to be removed without losing the fill fluid.

OMEGA diaphragm pressure seals are available for use with OMEGA pressure instrumentation:

- Pressure Transducers
PX602 (p. B-34), PX603 (p. B-81),
PX605 (p. B-122), PX673 (p. B-97),
PX675 (p. B-146)
- Dial Pressure Gauges
PGH (p. G-61), PGJ (p. G-61),
PGT Series (p. G-63)
- Pressure Switches
PSW-300 (p. H-23), PSW-370 (p. H-25),
PSW-350 (p. H-26), PSW-400 (p. H-41)

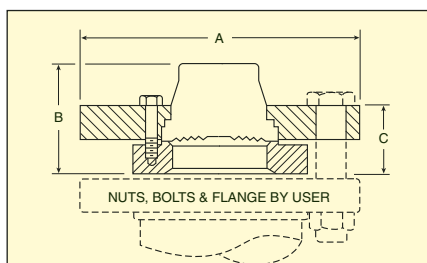
DIAPHRAGM PRESSURE SEALS TO ENSURE PROTECTION AND MEDIA COMPATIBILITY

100 Series



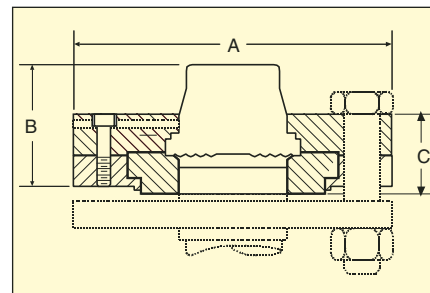
A		B		C	
in	mm	in	mm	in	mm
3 $\frac{3}{4}$	95	2 $\frac{7}{8}$	73	1 $\frac{13}{16}$	46

102 Series



FLANGE		A		B		C	
SIZE	RATING #	in	mm	in	mm	in	mm
1 $\frac{1}{2}$ "	150	4 $\frac{1}{4}$	127	2 $\frac{3}{8}$	61	1 $\frac{1}{2}$	38
	300	6 $\frac{1}{4}$	159			1 $\frac{1}{2}$	38
2"	150	6	152	1 $\frac{15}{16}$	49	1 $\frac{3}{8}$	35
	300	6 $\frac{1}{2}$	165			1 $\frac{1}{2}$	38

202 Series



FLANGE		A		B		C	
SIZE	RATING #	in	mm	in	mm	in	mm
1"	150	4 $\frac{1}{4}$	100	2 $\frac{3}{16}$	56	1 $\frac{1}{8}$	35
1 $\frac{1}{2}$ "	150	5	127	2 $\frac{5}{16}$	59	1 $\frac{3}{32}$	39
2"	150	6	152	2 $\frac{1}{8}$	54	1 $\frac{1}{16}$	40

MOST POPULAR MODELS HIGHLIGHTED!

SPECIFICATIONS

Pressure: 15 to 2500 psig and vacuums greater than 30 inHg; #150 flanges to 150 psi, #300 flanges to 300 psi

Temperature: See fill solution temperature range

Please Note: When diaphragm seals are connected to pressure instrumentation, slight shifts in calibration will result. OMEGA® recalibrates the instrument with the seal attached to negate calibration shifts. Please allow additional lead time when ordering.

Ordering Examples:

1) PGT-45L-100, 1-100-PM-1/2-CG

OMEGA test gauge and diaphragm seal with 1 FNPT process connection. All Monel® wetted parts and glycerine fill solution.

PGT-45L-100 \$356
1-100-PM-1/2-CG 520

Total \$876

2) PGT-45L-100, 2-102-PM-1/2-CK-300-RF

OMEGA test gauge with 51 mm (2") #300 raised face flange diaphragm seal. All Monel wetted parts and silicone solution.

PGT-45L-100 \$356
2-102-PM-1/2-CK-300-RF (\$495 + 60 + 85 + 495) 1135

Total \$1491

To Order

(Specify as Ordering Suffix to Pressure Instrument Model Number)

ORDERING SUFFIX	PRICE	WETTED MATERIALS	
		DIAPHRAGM	BOTTOM HOUSING

The 100 Series is Available with $\frac{1}{4}$ ", $\frac{1}{2}$ ", $\frac{3}{4}$ " or 1" in Process Fittings at No Additional Charge. Please Change Ordering Suffix Accordingly.

1/2-100-SS-1/2-CG*	\$390	316L SS	316 SS
1/2-100-PM-1/2-CG*	520	K-Monel	Monel 400
1/2-100-GG-1/2-CG*	850	Hastelloy® B	Hastelloy B
1/2-100-HH-1/2-CG*	850	Hastelloy® C	Hastelloy C
1/2-100-SV-1/2-CG*	280	316L SS	PVC ⁽¹⁾⁽³⁾

The 102 Series is Available with a 2" Process Connection; Add \$65 to Price. For a 2" #300-RF Flange, Add \$495.

11/2-102-SS-1/2-CG-150-RF	\$405	316L SS	316 SSF
11/2-102-PM-1/2-CG-150-RF	495	K-Monel	Monel 400
11/2-102-GG-1/2-CG-150-RF	725	Hastelloy B	Hastelloy B
11/2-102-HH-1/2-CG-150-RF	725	Hastelloy C	Hastelloy C

PTFE Seals with #150-RF Flange

1-202-TT-1/2-CG-150-RF	\$400	PTFE with 1" process conn. ⁽²⁾
11/2-202-TT-1/2-CG-150-RF	470	PTFE with 1 $\frac{1}{2}$ " process conn. ⁽²⁾
2-202-TT-1/2-CG-150-RF	505	PTFE with 2" process conn. ⁽²⁾

* To order seals separately, remove "CG" suffix from model number and subtract \$25 from price.
Notes: ¹ PVC maximum 200 psi @ 23°C (74°F), 125 psi @ 52°C (125°F), 80 psi @ 66°C (150°F). ² #150-RF PTFE flange maximum 150 psi @ 66°C (150°F). ³ PVC, no thread; use solvent cement to install.

Fill Solutions

TYPE	TEMP RANGE	CODE	PRICE	USAGE
Glycerine	-18 to 204°C (0 to 400°F)	CG	STD	Gauge pressure
Silicone	-40 to 315°C (-40 to 600°F)	CK	\$85	Gauge/vacuum pressure
Halocarbon	-57 to 150°C (-70 to 300°F)	CF	90	Gauge/vacuum pressure in presence of strong oxidizing agents (oxygen, chlorine, etc.)

omega.co.uk®

Your One-Stop Source for Process Measurement and Control!

Freephone 0800 488 488 | International +44(0) 161 777 6622 | Fax +44(0) 161 777 6622 | Sales@omega.co.uk

www.omega.co.uk



UNITED STATES

www.omega.com

1-800-TC-OMEGA
Stamford, CT.

CANADA

www.omega.ca

Laval(Quebec)
1-800-TC-OMEGA

GERMANY

www.omega.de

Deckenpfronn, Germany
0800-8266342

UNITED KINGDOM

www.omega.co.uk

Manchester, England
0800-488-488
+44-(0)161-777-6611

FRANCE

www.omega.fr

0800-466-342

BENELUX

www.omega.nl

0800-099-33-44



More than 100,000 Products Available!

• Temperature

Calibrators, Connectors, General Test and Measurement Instruments, Handheld Instruments for Temperature Measurement, Ice Point References, Indicating Labels, Crayons, Cements and Lacquers, Infrared Temperature Measurement Instruments, Recorders, Relative Humidity Measurement Instruments, PT100 Probes, PT100 Elements, Temperature & Process Meters, Timers and Counters, Temperature and Process Controllers and Power Switching Devices, Thermistor Elements, Probes and Assemblies, Thermocouples, Thermowells and Head and Well Assemblies, Transmitters, Thermocouple Wire, RTD Probes

• Flow and Level

Air Velocity Indicators, Doppler Flowmeters, Level Measurement, Magnetic Flowmeters, Mass Flowmeters, Pitot Tubes, Pumps, Rotameters, Turbine and Paddle Wheel Flowmeters, Ultrasonic Flowmeters, Valves, Variable Area Flowmeters, Vortex Shedding Flowmeters

• pH and Conductivity

Conductivity Instrumentation, Dissolved Oxygen Instrumentation, Environmental Instrumentation, pH Electrodes and Instruments, Water and Soil Analysis Instrumentation

• Data Acquisition

Communication Products and Converters, Data Acquisition and Analysis Software, Data Loggers, Plug-in Cards, Signal Conditioners, USB, RS232, RS485, Ethernet and Parallel Port Data Acquisition Systems, Wireless Transmitters and Receivers

• Pressure, Strain and Force

Displacement Transducers, Dynamic Measurement Force Sensors, Instrumentation for Pressure and Strain Measurements, Load Cells, Pressure Gauges, Pressure Reference Section, Pressure Switches, Pressure Transducers, Proximity Transducers, Regulators, Pressure Transmitters, Strain Gauges, Torque Transducers, Valves

• Heaters

Band Heaters, Cartridge Heaters, Circulation Heaters, Comfort Heaters, Controllers, Meters and Switching Devices, Flexible Heaters, General Test and Measurement Instruments, Heater Hook-up Wire, Heating Cable Systems, Immersion Heaters, Process Air and Duct, Heaters, Radiant Heaters, Strip Heaters, Tubular Heaters