

Temperature Data Logger Part of the NOMAD® Family

OM-CP-TEMP101A



- ✓ 10 Year Battery Life
- ✓ $\pm 0.5^{\circ}\text{C}$ ($\pm 0.9^{\circ}\text{F}$) Accuracy
- ✓ Multiple Start/Stop Function
- ✓ Ultra High Speed Download
- ✓ Memory: 2 Million Readings
- ✓ Memory Wrap Around
- ✓ Battery Life Indicator
- ✓ Optional Password protection
- ✓ Programmable High and Low Alarms
- ✓ Real-Time Operation

The OM-CP-TEMP101A is a state-of-the-art low cost battery powered temperature data logger.

The OM-CP-TEMP101A offers a 10 year battery life, a multiple start/stop function, ultra-high speed download capability, 2 million reading storage capacity, optional memory wrap, precision RTD sensing element, battery life indicator, optional password protection, programmable high-low alarms and more.

The OM-CP-TEMP101A is a major leap forward in both size and performance. Its real time clock ensures that all data is time and date stamped.

Using the software, starting, stopping and downloading from the OM-CP-TEMP101A is simple and easy. Graphical, tabular and summary data is provided for analysis and data can be viewed in $^{\circ}\text{C}$, $^{\circ}\text{F}$, K or $^{\circ}\text{R}$. The data can also be automatically exported to Excel for further calculations.

The storage medium is non-volatile solid state memory, providing maximum data security even if the battery becomes discharged. Its small size allows it to fit almost anywhere.

Data retrieval is simple. Plug it into an available USB port and the easy to use Windows® software does the rest. The software converts your PC into a real time strip chart recorder. Data can be printed in tabular format and can also be exported to a text or Microsoft Excel file.

The OM-CP-TEMP101A designed with our customers in mind. There are free firmware upgrades for the life of the product so that data loggers already deployed in the field can grow with new technological developments. Units do not need to be returned to the factory for upgrades. The user can do this automatically from any PC.

Specifications

Temperature Sensor:
Precision RTD element

Temperature Range:
 -40 to 80°C (-40 to 176°F)

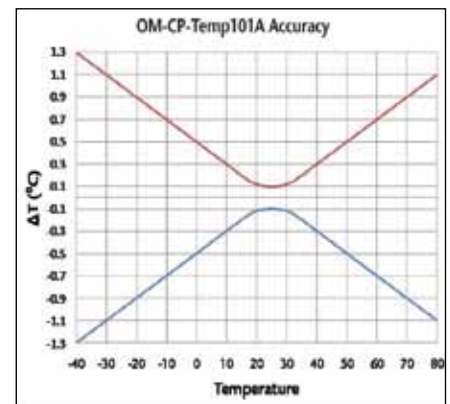
Temperature Resolution:
 0.01°C (0.018°F)

Calibrated Accuracy:
 $\pm 0.5^{\circ}\text{C}$ (0.9°F)

Reading Rate: 1 reading every second to 1 every 24 hours



OM-CP-TEMP101A shown actual size.



Accuracy vs. Temperature

Memory: 2,000,000 readings; software configurable memory wrap; 660,000 readings in multiple start/stop mode

Memory Wrap Around: Yes (software selectable)

Start Modes:

- Immediate start
- Delay start up to 18 months
- Multiple pushbutton start/stop

Multiple Start/Stop Mode: Start and stop the device multiple times without having to download data or communicate with a PC

Multiple Start/Stop Mode

Activation: To start the device press and hold the pushbutton for 5 seconds, the device has started logging; to stop the device press and hold the pushbutton for 5 seconds while the device is logging, the device has stopped logging

Real Time Recording: The device may be used with PC to monitor and record data in real-time

Alarm: Programmable high and low limits; alarm is activated when temperature reaches or exceeds set limits

LED Functionality:

Green LED Blinks: 10 second rate to indicate logging; 15 second rate to indicate delay start mode

Red LED Blinks: 10 second rate to indicate low battery and/or full memory; 1 second rate to indicate an alarm condition

Password Protection:

An optional password may be programmed into the device to restrict access to configuration options. Data may be read out without the password

Calibration: Digital calibration through software

Calibration Date: Automatically recorded within device

Battery Type: 3.6V lithium battery (included); user replaceable

Battery Life: 10 years typical at a 15 minute reading rate

Data Format: Date and time stamped °C, °F, K, °R

Time Accuracy: ±1 minute/month at 20°C (60°F), stand alone data logging

Computer Interface: USB (interface cable required); 115,200 baud

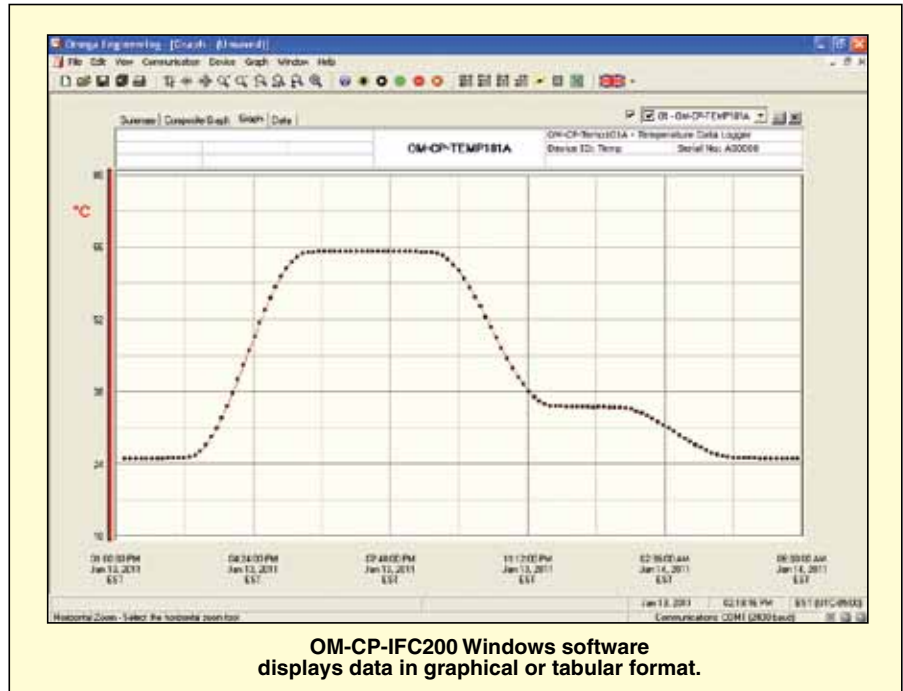
Software: XP SP3/Vista/7 and 8 (32-bit and 64-bit)

Operating Environment: -40 to 80°C (-40 to 176°F), 0 to 95% RH non-condensing

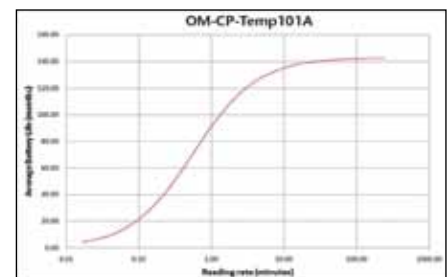
Dimensions: 56 L x 36 W x 16 mm D (2.2 x 1.4 x 0.6")

Weight: 24 g (0.8 oz)

Material: ABS plastic



OM-CP-TEMP10A shown actual size.



Average battery life vs. reading rate of the OM-CP-TEMP10A recording in a 25°C environment.

To Order

Model No.	Description
OM-CP-TEMP10A	Temperature data logger
OM-CP-TEMP10A-CERT	Temperature data logger and NIST calibration certificate
OM-CP-IFC200	Windows software and 1.8 m (6') USB interface cable
OM-CP-BAT105	Replacement 3.6V lithium battery

Comes complete with 3.6V lithium battery.

Operator's manual and USB cable are included with the **OM-CP-IFC200** Windows software (required to operate the data logger and sold separately).

Ordering Example: **OM-CP-TEMP10A-CERT**, temperature data logger with NIST calibration certificate and **OM-CP-IFC200**, Windows software.

omega.co.uk[®]

Your One-Stop Source for Process Measurement and Control!

Freephone 0800 488 488 | International +44(0) 161 777 6622 | Fax +44(0) 161 777 6622 | Sales@omega.co.uk

www.omega.co.uk



UNITED STATES

www.omega.com

1-800-TC-OMEGA
Stamford, CT.

UNITED KINGDOM

www.omega.co.uk

Manchester, England
0800-488-488
+44-(0)161-777-6611

CANADA

www.omega.ca

Laval(Quebec)
1-800-TC-OMEGA

FRANCE

www.omega.fr

0800-466-342

GERMANY

www.omega.de

Deckenfronn, Germany
0800-8266342

BENELUX

www.omega.nl

0800-099-33-44



More than 100,000 Products Available!

• Temperature

Calibrators, Connectors, General Test and Measurement Instruments, Handheld Instruments for Temperature Measurement, Ice Point References, Indicating Labels, Crayons, Cements and Lacquers, Infrared Temperature Measurement Instruments, Recorders, Relative Humidity Measurement Instruments, PT100 Probes, PT100 Elements, Temperature & Process Meters, Timers and Counters, Temperature and Process Controllers and Power Switching Devices, Thermistor Elements, Probes and Assemblies, Thermocouples, Thermowells and Head and Well Assemblies, Transmitters, Thermocouple Wire, RTD Probes

• Flow and Level

Air Velocity Indicators, Doppler Flowmeters, Level Measurement, Magnetic Flowmeters, Mass Flowmeters, Pitot Tubes, Pumps, Rotameters, Turbine and Paddle Wheel Flowmeters, Ultrasonic Flowmeters, Valves, Variable Area Flowmeters, Vortex Shedding Flowmeters

• pH and Conductivity

Conductivity Instrumentation, Dissolved Oxygen Instrumentation, Environmental Instrumentation, pH Electrodes and Instruments, Water and Soil Analysis Instrumentation

• Data Acquisition

Communication Products and Converters, Data Acquisition and Analysis Software, Data Loggers Plug-in Cards, Signal Conditioners, USB, RS232, RS485, Ethernet and Parallel Port Data Acquisition Systems, Wireless Transmitters and Receivers

• Pressure, Strain and Force

Displacement Transducers, Dynamic Measurement Force Sensors, Instrumentation for Pressure and Strain Measurements, Load Cells, Pressure Gauges, Pressure Reference Section, Pressure Switches, Pressure Transducers, Proximity Transducers, Regulators, Pressure Transmitters, Strain Gauges, Torque Transducers, Valves

• Heaters

Band Heaters, Cartridge Heaters, Circulation Heaters, Comfort Heaters, Controllers, Meters and Switching Devices, Flexible Heaters, General Test and Measurement Instruments, Heater Hook-up Wire, Heating Cable Systems, Immersion Heaters, Process Air and Duct, Heaters, Radiant Heaters, Strip Heaters, Tubular Heaters