

OM-CP-QUADTHERMOVAULT 4-Channel Oven Temperature Data Logger Part of the NOMAD® Family



OM-CP-QUADTHERMOVAULT data logger, \$1499, shown smaller than actual size

Starts at
\$1499



- ✓ 4 Thermocouple Input Channels
- ✓ Programmable Start Time
- ✓ Miniature Size
- ✓ Automatic Cold Junction Compensation
- ✓ Record Short Thermal Profiling Events

Oven temperature profiling on a regular basis can help ensure consistent product quality. Profiling enables users to optimize their process, improve process control, and make corrections whenever necessary.

The OM-CP-QUADTHERMOVAULT is a 4-channel, thermally insulated, battery-powered oven temperature recorder able to withstand extreme temperatures. It can withstand oven temperatures of up to 350°C (662°F) for 25 minutes. When properly sealed, its stainless steel enclosure and thermal properties make it the ideal temperature recording device for applications such as powder coating cure ovens,

wet coating cure ovens, batch ovens, and conveyor ovens. The external thermocouple probes provide accurate temperature measurements and fast response times.

Our user-friendly software easily downloads the data to a computer, where the readings can be displayed in degrees Celsius, Fahrenheit, Kelvin, or Rankine. The software allows the user to view all data points and a summary of the data being viewed, for calculations such as mean kinetic temperature (MKT).

If additional analysis is needed, the data can be exported to Excel simply by clicking a button. The OM-CP-QUADTHERMOVAULT'S small size allows it to fit almost anywhere. Data retrieval is simple. Plug it into an available COM port and our easy-to-use software does the rest. Data can be printed in graphical or tabular format or it can be exported to a text or Microsoft Excel file.

Specifications

INTERNAL CHANNEL

Temperature Range:
-20 to 60°C (-4 to 140°F)
Temperature Resolution: 0.1°C
Calibrated Accuracy:
±0.5°C (0 to 50°C)

FOUR REMOTE CHANNELS

Thermocouple Types:

J, K, T, E, R, S, B, N

Thermocouple Connection:

Screw terminals

Cold Junction Compensation:

Automatic, based on internal channel

Start Time: Start time and date are programmable through software, up to six months in advance

Memory: 26,214 readings/channel

Reading Interval: 12/minute to 2/day selectable in software

Calibration:

Digital calibration through software

Calibration Date:

Automatically recorded within device

Power: 9 V lithium battery (included)

Battery Life: 1 year typical

Data Format: Date and time stamped; °C, °F, °K, °R, V, mV, V

Time Accuracy:

±1 minute/month (at 20°C, RS-232 port not in use)

Computer Interface:

PC serial, RS-232C COM or USB (interface cable required); 2400 baud

Software:

WIN98/NT/2000/XP/VISTA 32-bit

(VISTA 32-bit version only; VISTA 64-bit is not supported)

Operating Environment:

0 to 95% RH non-condensing

Dimensions:

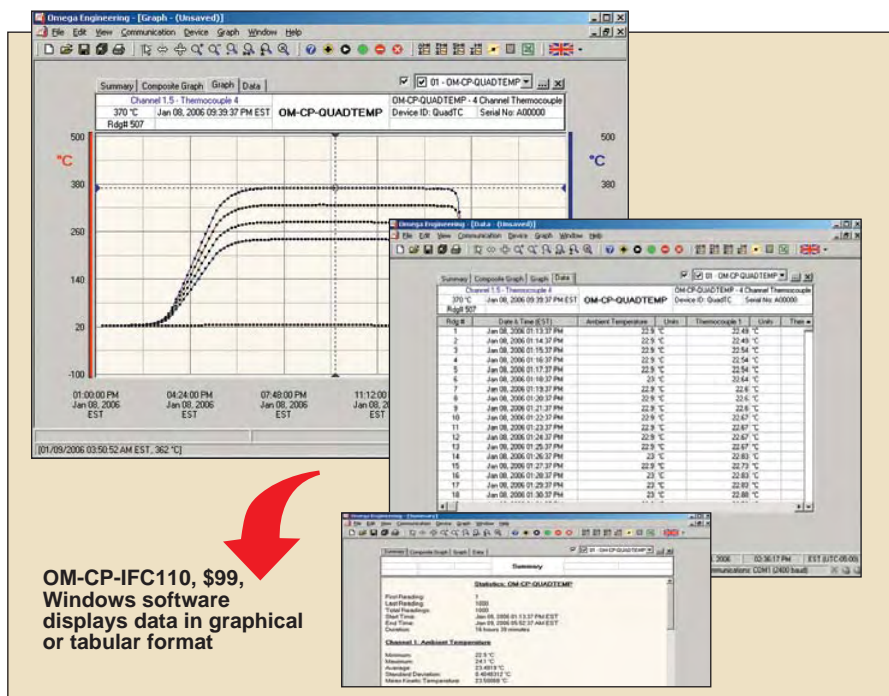
165 H x 200 L x 82 mm D
(6.5 x 7.9 x 3.2")

Weight: 5.7 kg (12.5 lbs)

Enclosure (Thermal Box):

Thermal insulators encased in stainless steel

Enclosure (Logger): Black Delrin®

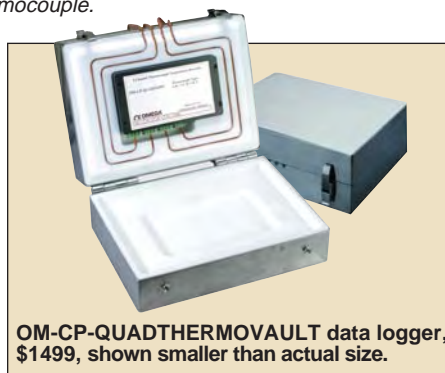


Thermocouple Type	Range	Resolution	Accuracy*
J	-210 to 760°C	0.1°C	±0.5°C
K	-270 to 1370°C	0.1°C	±0.5°C
T	-270 to 400°C	0.1°C	±0.5°C
E	-270 to 980°C	0.1°C	±0.5°C
R	-50 to 1760°C	0.5°C	±2.0°C
S	-50 to 1760°C	0.5°C	±2.0°C
B	50 to 1820°C	0.5°C	±2.0°C
N	-270 to 1300°C	0.1°C	±0.5°C

* Accuracy does not include errors due to thermocouple.

Maximum Exposure Temperature vs Duration	
Ambient Temp °C (°F)	Max Duration in Minutes**
100 (212)	110
150 (302)	62
200 (392)	45
250 (482)	35
260 (500)	34
300 (572)	30
350 (662)	25

** Assuming logger box is initially at 25°C.



AVAILABLE FOR FAST DELIVERY!

To Order (Specify Model Number)		
Model No.	Price	Description
OM-CP-QUADTHERMOVAULT	\$1499	Oven temperature data logger
OM-CP-QUADTHERMOVAULT-CERT	1559	Oven temperature data logger with NIST calibration certificate
OM-CP-IFC110	99	Windows software and 1.2 m (4') RS-232 cable with DB9F termination
OM-CP-IFC200	119	Windows software and 3.7 m (12') USB interface cable
OM-CP-BAT103	20	Replacement 9 V lithium battery

Operator's manual and RS-232 cable are included with the **OM-CP-IFC110** Windows software (required to operate the data logger), which is sold separately.

Ordering Example: **OM-CP-QUADTHERMOVAULT-CERT**, oven temperature data logger with NIST calibration certificate, **OM-CP-IFC110**, Windows software and RS-232 cable, \$1559 + 99 = **\$1658**.

omega.co.uk[®]

Your One-Stop Source for Process Measurement and Control!

Freephone 0800 488 488 | International +44(0) 161 777 6622 | Fax +44(0) 161 777 6622 | Sales@omega.co.uk

www.omega.co.uk



UNITED STATES

www.omega.com

1-800-TC-OMEGA
Stamford, CT.

CANADA

www.omega.ca

Laval(Quebec)
1-800-TC-OMEGA

GERMANY

www.omega.de

Deckenfronn, Germany
0800-8266342

UNITED KINGDOM

www.omega.co.uk

Manchester, England
0800-488-488
+44-(0)161-777-6611

FRANCE

www.omega.fr

0800-466-342

BENELUX

www.omega.nl

0800-099-33-44



More than 100,000 Products Available!

• Temperature

Calibrators, Connectors, General Test and Measurement Instruments, Handheld Instruments for Temperature Measurement, Ice Point References, Indicating Labels, Crayons, Cements and Lacquers, Infrared Temperature Measurement Instruments, Recorders, Relative Humidity Measurement Instruments, PT100 Probes, PT100 Elements, Temperature & Process Meters, Timers and Counters, Temperature and Process Controllers and Power Switching Devices, Thermistor Elements, Probes and Assemblies, Thermocouples, Thermowells and Head and Well Assemblies, Transmitters, Thermocouple Wire, RTD Probes

• Flow and Level

Air Velocity Indicators, Doppler Flowmeters, Level Measurement, Magnetic Flowmeters, Mass Flowmeters, Pitot Tubes, Pumps, Rotameters, Turbine and Paddle Wheel Flowmeters, Ultrasonic Flowmeters, Valves, Variable Area Flowmeters, Vortex Shedding Flowmeters

• pH and Conductivity

Conductivity Instrumentation, Dissolved Oxygen Instrumentation, Environmental Instrumentation, pH Electrodes and Instruments, Water and Soil Analysis Instrumentation

• Data Acquisition

Communication Products and Converters, Data Acquisition and Analysis Software, Data Loggers Plug-in Cards, Signal Conditioners, USB, RS232, RS485, Ethernet and Parallel Port Data Acquisition Systems, Wireless Transmitters and Receivers

• Pressure, Strain and Force

Displacement Transducers, Dynamic Measurement Force Sensors, Instrumentation for Pressure and Strain Measurements, Load Cells, Pressure Gauges, Pressure Reference Section, Pressure Switches, Pressure Transducers, Proximity Transducers, Regulators, Pressure Transmitters, Strain Gauges, Torque Transducers, Valves

• Heaters

Band Heaters, Cartridge Heaters, Circulation Heaters, Comfort Heaters, Controllers, Meters and Switching Devices, Flexible Heaters, General Test and Measurement Instruments, Heater Hook-up Wire, Heating Cable Systems, Immersion Heaters, Process Air and Duct, Heaters, Radiant Heaters, Strip Heaters, Tubular Heaters