

Pressure Data Logger with LCD Display

OM-CP-PR2000



Optional

- ✓ Large, Backlit LCD Display
- ✓ Front Keypad w/Lock Feature
- ✓ Standard 1/4" NPT Fitting
- ✓ High Speed Download
- ✓ Real-Time Operation
- ✓ User-Selectable Measurement Units
- ✓ NIST Traceable Calibration
- ✓ Min/Max and Average Statistics
- ✓ Programmable Start/Stop Time
- ✓ Convenient Status Indicators
- ✓ User Replaceable Battery and External Power

The OM-CP-PR2000 is a battery powered recorder with a LCD display. It is perfect for applications requiring display pressures readings and a logger.

The 8-button keypad and large LCD provide convenient access to current data and recorder setup. Additionally, memory and battery levels, external power status, and sampling and recording status are shown on the LCD.

Available on-screen data includes: statistics (min, max, average); recording status (start, stop and recording rate); display options (units, text size); and calibration information (date calibrated, date for recalibration). Statistics can be cleared at any time during logging.

With 262,143 readings, the OM-CP-PR2000 has one of the largest memory capacities of any similar data recorder on the market. The non-volatile memory will retain recorded data, even if AC and battery power are lost.

NIST traceable calibration is available for users needing to meet regulatory requirements. Creating permanent records, performing data calculations, and the graphing of data is quick and easy: Simply connect the interface cable to an available USB or serial port and, with a few clicks of the mouse, data is downloaded and ready for review or export to Excel.



OM-CP-PR2000-30-A, data logger shown larger than actual size

Specifications

Pressure Sensor:

Semiconductor strain gage

Pressure Port:

1/4 NPT, AISI 303 stainless steel

Pressure Range:

0 to 30, 100, 300 and 500 psia/g;
0 to 1000 and 5000 psia

Pressure Resolution: 0.002, 0.005, 0.02, 0.05 psia/g

Calibrated Accuracy:

2% FSR, 0.25% @ 25°C typical

Pressure Response Time:

0.1 ms (10 to 90% FSR)

DOT-MATRIX LCD

Dimensions:

63 x 35 mm (2.5 x 1.375")

Text: Configurable channel text size

Indicators: Power, status, memory

Backlight: Configurable w/auto shut-off and contrast adjustment

Start/Stop Time: Software programmable start time and date, up to six months in advance; programmable stop time

Memory: 262,143 total readings; software configurable memory wrap

Reading Rate: 1 reading every 2 seconds to 1 every 24 hours

Calibration: Digital calibration through software

Calibration Date: Automatically recorded within device

Battery Type: 6 alkaline "AA" batteries (included), user replaceable; optional ac adaptor

Battery Life: 1 year battery life at 1 min reading rate with display off. 30 days typical with continuous LCD and no backlight usage.

Data Format: PSIG, inHg, mmHg, bar, atm, Torr, Pa, kPa, MPa

Time Accuracy: ±1 minute/month (at 20° to 30°C)

Computer Interface: PC serial or USB (interface cable required); 115,200 baud

Software: XP SP3/Vista/7 and 8 (32-bit and 64-bit)

Operating Environment: -20 to 54°C, (-4 to 129°F)
0 to 95% RH non-condensing

Dimensions:

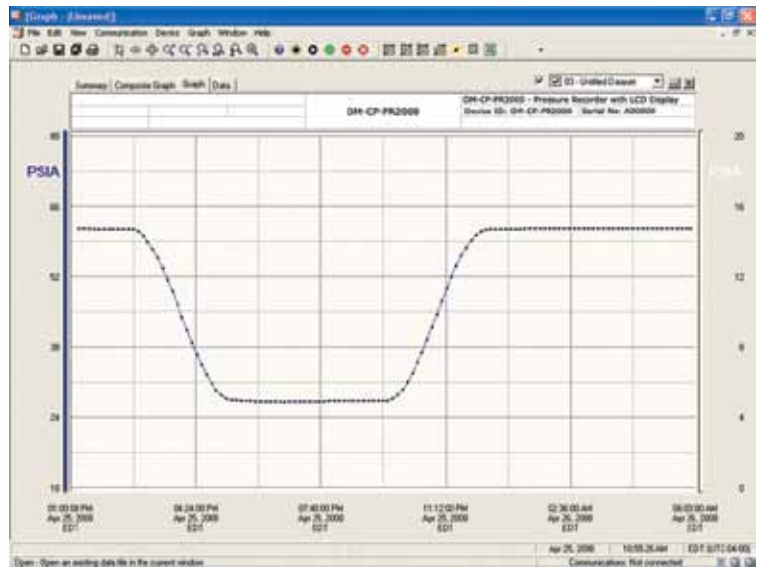
122 L x 84 W x 32 mm Dia (5.1 x 4.8 x 1.78")

Weight: 1134 g (40 oz)

Enclosure: Black anodized aluminum case/NPT steel



OM-CP-PR2000-30-A,
data logger shown
larger than actual size



OM-CP-IFC200,
Windows® software
displays data in
graphical or tabular
format

To Order Visit omega.com/om-cp-pr2000 for Pricing and Details

Model No.	Description
OM-CP-PR2000-30-A	0 to 30 psia pressure data logger with LCD display
OM-CP-PR2000-30-G	0 to 30 psig pressure data logger with LCD display
OM-CP-PR2000-100-A	0 to 100 psia pressure data logger with LCD display
OM-CP-PR2000-100-G	0 to 100 psig pressure data logger with LCD display
OM-CP-PR2000-300-A	0 to 300 psia pressure data logger with LCD display
OM-CP-PR2000-300-G	0 to 300 psig pressure data logger with LCD display
OM-CP-PR2000-500-A	0 to 500 psia pressure data logger with LCD display
OM-CP-PR2000-500-G	0 to 500 psig pressure data logger with LCD display
OM-CP-PR2000-1000-A	0 to 1000 psia pressure data logger with LCD display
OM-CP-PR2000-5000-A	0 to 5000 psia pressure data logger with LCD display
OM-CP-IFC200	Windows software and 1.8 m (6') USB interface cable
OM-CP-110-PWR-2000	110 Vac power adaptor
OM-CP-220-PWR-2000	220 Vac power adaptor

Comes complete with 6 "AA" batteries. Operator's manual and USB cable are included with the **OM-CP-IFC200** (software is required to operate the data logger and is sold separately).

To order data logger with NIST calibration certificate, add suffix "**-CERT**" to model number and add additional cost to price.

Ordering Example: **OM-CP-PR2000-30-A-CERT**, pressure data logger with NIST calibration certificate, **OM-CP-IFC200**, Windows software and USB interface cable with DB9F termination.

omega.co.uk®

Your One-Stop Source for Process Measurement and Control!

Freephone 0800 488 488 | International +44(0) 161 777 6622 | Fax +44(0) 161 777 6622 | Sales@omega.co.uk

www.omega.co.uk



UNITED STATES

www.omega.com

1-800-TC-OMEGA
Stamford, CT.

UNITED KINGDOM

www.omega.co.uk

Manchester, England
0800-488-488
+44-(0)161-777-6611

CANADA

www.omega.ca

Laval(Quebec)
1-800-TC-OMEGA

FRANCE

www.omega.fr

0800-466-342

GERMANY

www.omega.de

Deckenfronn, Germany
0800-8266342

BENELUX

www.omega.nl

0800-099-33-44



More than 100,000 Products Available!

• Temperature

Calibrators, Connectors, General Test and Measurement Instruments, Handheld Instruments for Temperature Measurement, Ice Point References, Indicating Labels, Crayons, Cements and Lacquers, Infrared Temperature Measurement Instruments, Recorders, Relative Humidity Measurement Instruments, PT100 Probes, PT100 Elements, Temperature & Process Meters, Timers and Counters, Temperature and Process Controllers and Power Switching Devices, Thermistor Elements, Probes and Assemblies, Thermocouples, Thermowells and Head and Well Assemblies, Transmitters, Thermocouple Wire, RTD Probes

• Flow and Level

Air Velocity Indicators, Doppler Flowmeters, Level Measurement, Magnetic Flowmeters, Mass Flowmeters, Pitot Tubes, Pumps, Rotameters, Turbine and Paddle Wheel Flowmeters, Ultrasonic Flowmeters, Valves, Variable Area Flowmeters, Vortex Shedding Flowmeters

• pH and Conductivity

Conductivity Instrumentation, Dissolved Oxygen Instrumentation, Environmental Instrumentation, pH Electrodes and Instruments, Water and Soil Analysis Instrumentation

• Data Acquisition

Communication Products and Converters, Data Acquisition and Analysis Software, Data Loggers Plug-in Cards, Signal Conditioners, USB, RS232, RS485, Ethernet and Parallel Port Data Acquisition Systems, Wireless Transmitters and Receivers

• Pressure, Strain and Force

Displacement Transducers, Dynamic Measurement Force Sensors, Instrumentation for Pressure and Strain Measurements, Load Cells, Pressure Gauges, Pressure Reference Section, Pressure Switches, Pressure Transducers, Proximity Transducers, Regulators, Pressure Transmitters, Strain Gauges, Torque Transducers, Valves

• Heaters

Band Heaters, Cartridge Heaters, Circulation Heaters, Comfort Heaters, Controllers, Meters and Switching Devices, Flexible Heaters, General Test and Measurement Instruments, Heater Hook-up Wire, Heating Cable Systems, Immersion Heaters, Process Air and Duct, Heaters, Radiant Heaters, Strip Heaters, Tubular Heaters