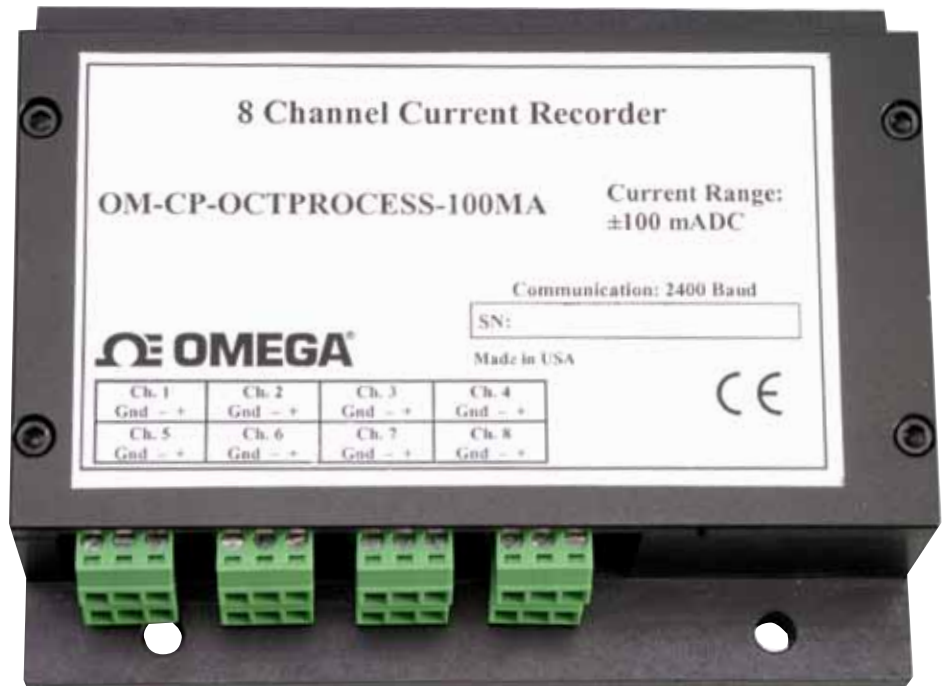


8-Channel Current Data Logger Part of the NOMAD® Family

OM-CP-OCTPROCESS



OM-CP-OCTPROCESS-100MA data logger shown larger than actual size.

- ✓ 16-Bit Resolution
- ✓ Programmable Engineering Units, Scale Factor, and Offset Value
- ✓ Memory Wraparound
- ✓ Miniature Size
- ✓ User Calibration Through Software
- ✓ Real-Time Operation

The OM-CP-OCTPROCESS is an 8 channel, battery powered, standalone current data logger. The OM-CP-OCTPROCESS lets the user store user defined units in the device, as well as scale factors and offset values. This allows easy linearization and scaling allows any process meter that provides an analog output to process units. This allows easy automatic linearization and scaling of any process meter that provides an analog output to process units.

This portable, easy-to-use device will measure and record up to 16,383 current measurements per channel.

The OM-CP-OCTPROCESS represents a major leap in both size and performance. Its small size allows it to fit almost anywhere. Its real-time clock ensures that all data is time and date stamped. The storage medium is non-volatile solid state memory, providing maximum data security, even if the battery becomes discharged.

Data retrieval is simple. Plug the logger into an available COM port and our easy-to-use software does the rest. The software converts your PC into a real-time strip chart recorder. Data can be printed in graphical or tabular format. It can also be exported to a text or Microsoft Excel file.

Specifications

Input Channels:

8 non-isolated inputs

Memory: 16,383 readings/channel

Input Connection: Screw terminal

ADC Resolution: 16 bits

Analog Conversion Time: 133 ms

Frequency Rejection: 60 Hz

Current Calibration:

Digital calibration is available through software

Calibration Date: Automatically recorded within device to alert user when calibration is required

Recording Interval: 1 second to 12 hours selectable with software

Start Time: Start time and date are programmable through software

Real-Time Recording:

Device can be used with PC to monitor and record data in real time

Memory Wraparound:

Selectable in software

Power: 9V lithium battery

(included); 120 Vac power optional

Battery Life: 1 year typical

Time Accuracy: ±1 minute per month at 20°C

Data Format: Date and time stamped in µA, mA, A and other engineering units programmable through software

Weight: 480 g (17 oz)

Computer Interface:

PC serial, RS232C COM or USB (interface cable required); 2400 baud

Software: XP SP3/Vista/7 and 8 (32-bit and 64-bit)

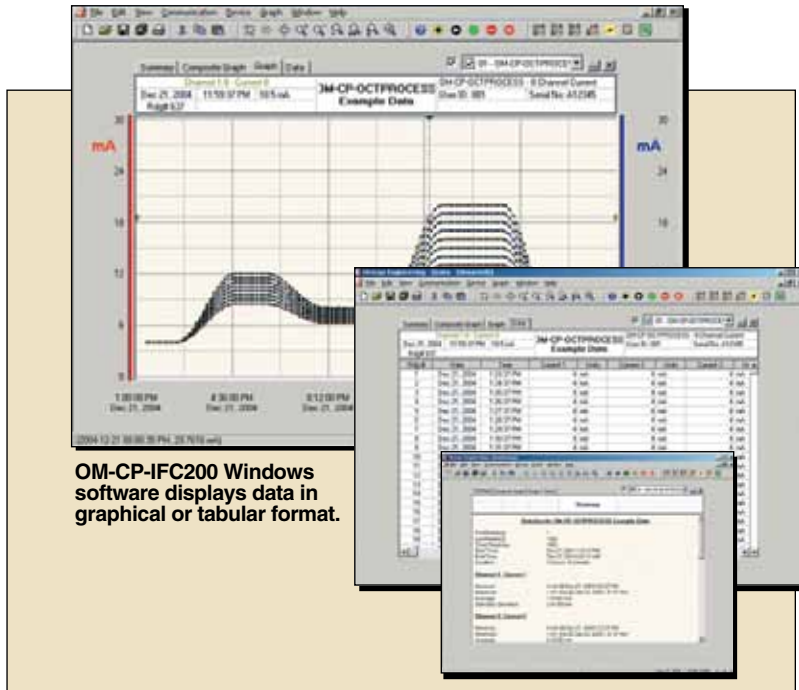
Operating Environment:

40 to 60°C (-40 to 140°F)
0 to 95% RH non-condensing

Dimensions:

39 D x 112 W x 89 mm H
(1.5 x 4.4 x 3.5")

Material: Black anodized aluminum



OM-CP-IFC200 Windows software displays data in graphical or tabular format.



OM-CP-OCTPROCESS-100MA data logger shown smaller than actual size.

INPUT RANGES	OM-CP-OCTPROCESS-1MA	OM-CP-OCTPROCESS-25MA	OM-CP-OCTPROCESS-100MA
Nominal Range	±1 mA	±25 mA	±100 mA
Measurement Range	±1.5 mA	±30 mA	±120 mA
Resolution	0.05 µA	1 µA	5 µA
Calibrated Accuracy	±0.5% FSR	±0.1% FSR	±0.1% FSR
Input Impedance	50 Ω	10 Ω	2 Ω
Overload Protection	±20 mA	±100 mA	±125 mA

Specified accuracy range: nominal range @25°C

To Order	
Model No.	Description
OM-CP-OCTPROCESS-1MA	8-channel current data logger, ±1mA range
OM-CP-OCTPROCESS-1MA-CERT	8-channel current data logger, ±1mA range with NIST calibration certificate
OM-CP-OCTPROCESS-25MA	8-channel current data logger, ±25 mA range
OM-CP-OCTPROCESS-25MA-CERT	8-channel current data logger, ±25 mA range with NIST calibration certificate
OM-CP-OCTPROCESS-100MA	8-channel current data logger, ±100 mA range
OM-CP-OCTPROCESS-100MA-CERT	8-channel current data logger, ±100 mA range with NIST calibration certificate
OM-CP-IFC200	Windows software and 1.8 m (6') USB interface cable
OM-CP-BAT103	Replacement 9 V lithium battery
OM-CP-CONNECTOR-3	Replacement 3 position terminal block connector

Comes complete with 9V lithium battery.

Operator's manual and USB cable are included with the **OM-CP-IFC200** Windows software (software is required to operate the data logger and is sold separately).

To order data loggers with optional 120 Vac power, add suffix "-AC" to model number for additional cost.

Ordering Example: **OM-CP-OCTPROCESS-25MA-CERT** 8-channel current data logger with NIST calibration certificate, **OM-CP-IFC200** Windows software and USB interface cable.