

Event Data Logger Part of the NOMAD® Family

OM-CP-EVENT101A



- ✓ Interfaces to Tipping Bucket Rain Gages and Other Devices with TTL Pulse, Contact Closure Output
- ✓ 10 Year Battery Life
- ✓ 4 Hz Reading Rate
- ✓ Multiple Start/Stop Function
- ✓ Ultra High Speed Download
- ✓ Memory Wrap
- ✓ Battery Life Indicator
- ✓ Optional Password Protection
- ✓ Field Upgradeable

The OM-CP-EVENT101A is part of a new series of low cost, state-of-the-art data logging devices. The OM-CP-EVENT101A offers a 10 year battery life, 4 Hz reading rate, a multiple start/stop function, ultra-high speed download capability, 406,323 reading storage capacity, optional memory wrap, battery life indicator, optional password protection and more.

The OM-CP-EVENT101A senses input transitions or contact closures from external sources such as transducers or pulse state initiators (gas, water and electric meters) and record the time that a particular event has occurred. Once activated, the data logger senses and records transition or state changes at the input. Its real-time clock ensures that all data is time and date stamped. This is ideal for recording events. The storage medium is non-volatile solid state memory, providing maximum data security even if the battery becomes discharged. The small size of these devices allows them to fit almost anywhere.

Data retrieval is simple. Simply plug it into an available USB port and our user-friendly software does the rest.

The software converts a PC into a real-time strip chart recorder. Data can be printed in graphical and tabular format or exported to a text or Microsoft Excel® file. The storage medium is non-volatile solid state memory, providing maximum data security even if the battery becomes discharged.



OM-CP-EVENT101A shown larger than actual size.

The OM-CP-EVENT101A was designed with our customers in mind. There are free firmware upgrades for the life of the product so that data loggers already deployed in the field can grow with new technological developments. Units do not need to be returned to the factory for upgrades. The user can do this automatically from any PC.

Specifications

Input Connection:

Removable screw terminal

Input Range: 0 to 30V

Input Low: <0.4V

Input High: >2.8V

Internal Weak Pull-Up: <60 μ A

Input Impedance: >60 k Ω

Minimum Input Active

(Low) Time: 10 Microseconds

Time Resolution: 4 Hz (reading rate selectable in software)

Reading Rate:

4 Hz to 1 every 24 hours

Memory: 406,323 readings; software configurable memory wrap

Memory Wrap Around: Yes

Start Modes:

- Immediate start
- Delay start up to 18 months
- Multiple pushbutton start/stop

Stop Modes:

- Manual through software
- Timed (specific date and time)

Multiple Start/Stop Mode:

Start and stop the device multiple times without having to download data or communicate with a PC

Multiple Start/Stop Mode Activation:

To Start the Device:

Press and hold the pushbutton for 5 seconds, the green LED will flash during this time. The device has started logging

To Stop the Device:

Press and hold the pushbutton for 5 seconds, the red LED will flash for 3 seconds and then the green LED will flash for two seconds. The device has stopped logging

Real Time Recording: The device may be used with PC to monitor and record data in real-time

LED Functionality:

Green LED Blinks:

10 second rate to indicate logging; 15 second rate to indicate delay start mode

Red LED Blinks:

10 second rate to indicate low battery and/or full memory

Password Protection:

An optional password may be programmed into the device to restrict access to configuration options. Data may be read out without the password

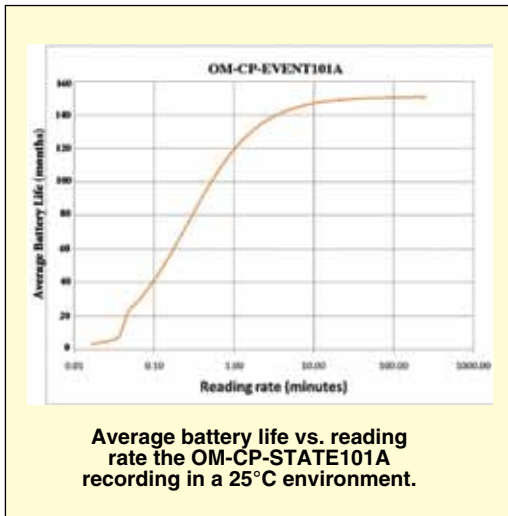
Engineering Units:

Native measurement units can be scaled to display measurement units of another type such as on/off, open/closed or rainfall

Battery Type:

3.6V lithium battery (included); user replaceable

Battery Life: 10 years typical, dependent upon frequency and duty cycle



OM-CP-WATERBOX101A, optional weatherproof enclosure for data logger, shown smaller than actual size.

Time Accuracy:
±1 minute/month at 20°C (68°F), stand alone data logging

Computer Interface:
USB (interface cable required); 115,200 baud

Software: XP SP3/Vista and Windows® 7 (32 and 64-bit)

Operating Environment:
-40 to 80°C (-40 to 176°F), 0 to 95% RH non-condensing

Dimensions:

Data Logger:
36 H x 56 W x 16 mm D
(1.4 x 2.2 x 0.6")

Waterbox Enclosure:
74 H x 148 W x 39 mm D
(2.9 x 5.8 x 1.5")

Weight: 24 g (0.9 oz)

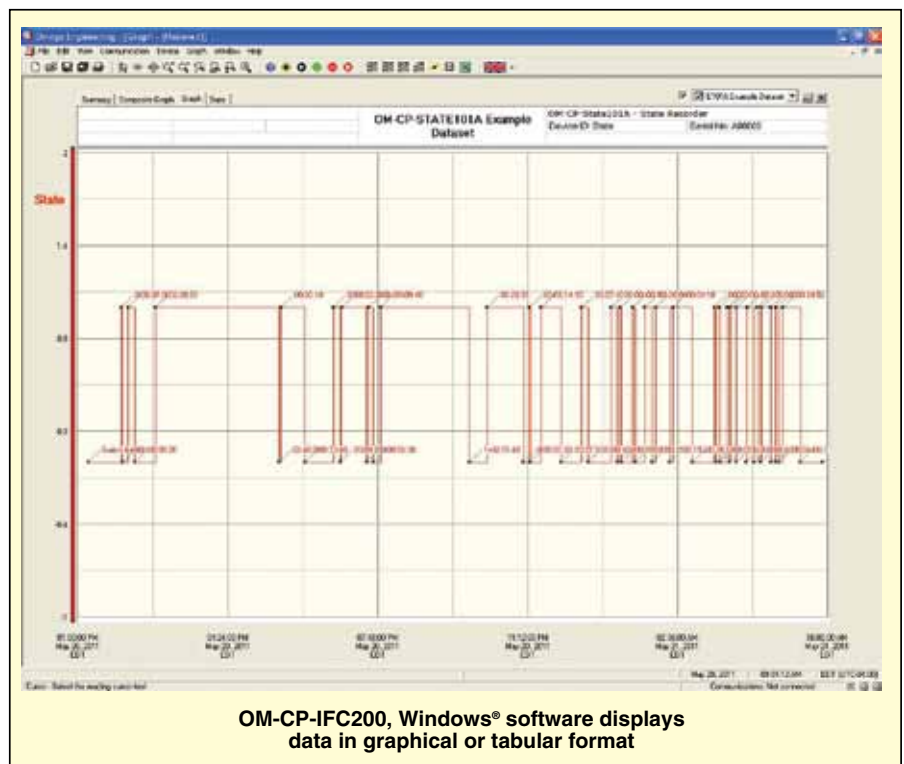
Materials:

Data Logger: ABS Plastic

Waterbox Enclosure:

Black anodized aluminum

Material: ABS plastic



To Order Visit omega.com/om-cp-event101a for Pricing and Details

Model No.	Description
OM-CP-EVENT101A	Event data logger
OM-CP-IFC200	Windows software and 1.8 m (6') USB interface cable
OM-CP-BAT105	Replacement 3.6V lithium battery
OM-CP-WATERBOX101A	Weatherproof NEMA 4 (IP65) enclosure for data logger

Comes complete with 3.6V lithium battery. USB cable and operator's manual are included with the **OM-CP-IFC200** Windows software (required to operate the data logger and sold separately).

Ordering Example: **OM-CP-EVENT101A**, event data logger and **OM-CP-IFC200**, Windows software.

omega.co.uk[®]

Your One-Stop Source for Process Measurement and Control!

Freephone 0800 488 488 | International +44(0) 161 777 6622 | Fax +44(0) 161 777 6622 | Sales@omega.co.uk

www.omega.co.uk



UNITED STATES

www.omega.com

1-800-TC-OMEGA
Stamford, CT.

UNITED KINGDOM

www.omega.co.uk

Manchester, England
0800-488-488
+44-(0)161-777-6611

CANADA

www.omega.ca

Laval(Quebec)
1-800-TC-OMEGA

FRANCE

www.omega.fr

0800-466-342

GERMANY

www.omega.de

Deckenfronn, Germany
0800-8266342

BENELUX

www.omega.nl

0800-099-33-44



More than 100,000 Products Available!

• Temperature

Calibrators, Connectors, General Test and Measurement Instruments, Handheld Instruments for Temperature Measurement, Ice Point References, Indicating Labels, Crayons, Cements and Lacquers, Infrared Temperature Measurement Instruments, Recorders, Relative Humidity Measurement Instruments, PT100 Probes, PT100 Elements, Temperature & Process Meters, Timers and Counters, Temperature and Process Controllers and Power Switching Devices, Thermistor Elements, Probes and Assemblies, Thermocouples, Thermowells and Head and Well Assemblies, Transmitters, Thermocouple Wire, RTD Probes

• Flow and Level

Air Velocity Indicators, Doppler Flowmeters, Level Measurement, Magnetic Flowmeters, Mass Flowmeters, Pitot Tubes, Pumps, Rotameters, Turbine and Paddle Wheel Flowmeters, Ultrasonic Flowmeters, Valves, Variable Area Flowmeters, Vortex Shedding Flowmeters

• pH and Conductivity

Conductivity Instrumentation, Dissolved Oxygen Instrumentation, Environmental Instrumentation, pH Electrodes and Instruments, Water and Soil Analysis Instrumentation

• Data Acquisition

Communication Products and Converters, Data Acquisition and Analysis Software, Data Loggers Plug-in Cards, Signal Conditioners, USB, RS232, RS485, Ethernet and Parallel Port Data Acquisition Systems, Wireless Transmitters and Receivers

• Pressure, Strain and Force

Displacement Transducers, Dynamic Measurement Force Sensors, Instrumentation for Pressure and Strain Measurements, Load Cells, Pressure Gauges, Pressure Reference Section, Pressure Switches, Pressure Transducers, Proximity Transducers, Regulators, Pressure Transmitters, Strain Gauges, Torque Transducers, Valves

• Heaters

Band Heaters, Cartridge Heaters, Circulation Heaters, Comfort Heaters, Controllers, Meters and Switching Devices, Flexible Heaters, General Test and Measurement Instruments, Heater Hook-up Wire, Heating Cable Systems, Immersion Heaters, Process Air and Duct, Heaters, Radiant Heaters, Strip Heaters, Tubular Heaters