



# ETHERNET MEASUREMENT AND CONTROL DEVICES

## Virtual Chart Recorder Pressure + Temperature

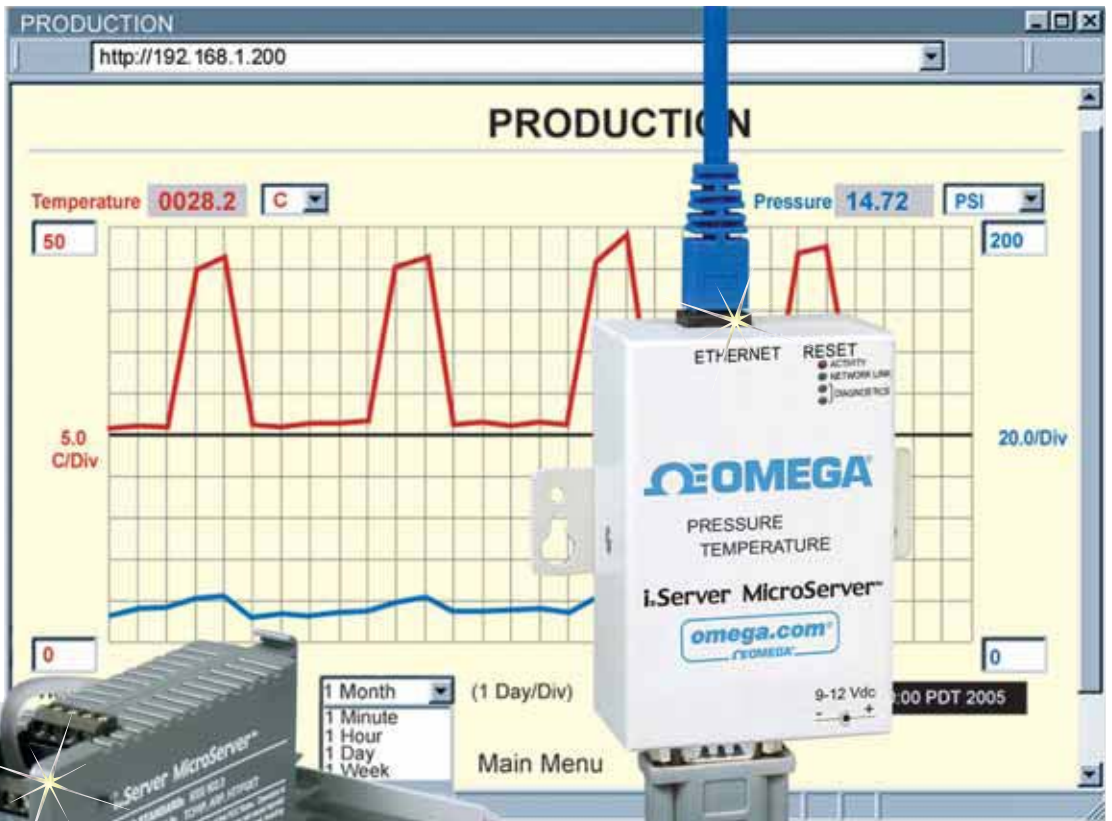
### iServer MicroServer™

iPTX-D  
Starts at  
**£198**

CE  
FCC-B

- ✓ Virtual Chart Recorder
- ✓ Web Server
- ✓ Accurate
- ✓ Email Alarms
- ✓ Data Logging
- ✓ No Special Software Required

**iPTX**



iPTX-W, £198, shown smaller than actual size

iPTX-D iServer MicroServer™ with pressure transducer (included), £198, shown smaller than actual size

All iPTX models include a 304 SS, 1/8-27 NPT pressure transducer with twist lock connector!

### View Air (Inert Gas) Pressure and Temperature with a Web Browser

The OMEGA® iPTX transmitter lets the user monitor and record air (inert gas) pressure (0 to 200 psi) and temperature over an Ethernet network or the Internet with no special software except a Web browser. The OMEGA iPTX serves active Web pages to display real-time readings, display charts of

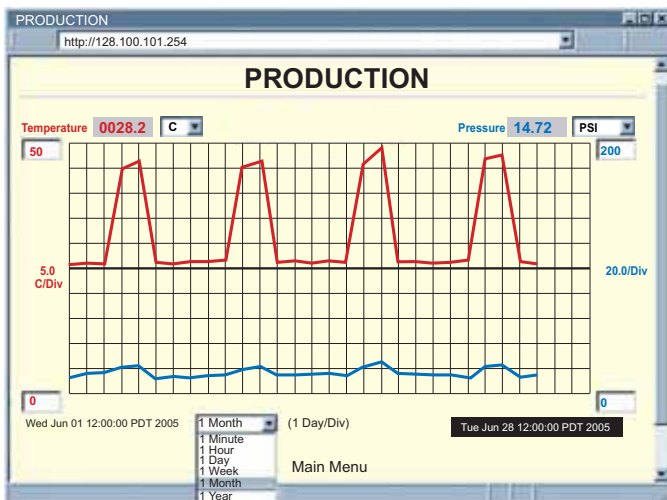
air pressure and temperature, or log data in standard formats for use in a spreadsheet or data acquisition program such as Excel or Visual Basic.

The virtual chart viewed on the Web page is a JAVA™ Applet that records a chart over the LAN or Internet in real time. With the OMEGA® iPTX, there is no need to invest time and money learning a proprietary software program to log or chart the data.



## Adjustable Charts

Chart scales are fully adjustable on the fly. For example, the chart can display one minute, one hour, one day, one week, one month or one year. Temperature can be charted across the full span (0 to 70°C) or within any narrow range (such as 20 to 30°C). Air (inert gas) Pressure can be displayed in kilopascals (kPa), pounds per square inch (psi) or kilograms per square centimeter (Kg/cm<sup>2</sup>).



Adjustable Chart Web Page.

## Display and Chart Measurements

The iPTX transmitters come complete with a air pressure / temperature probe for measurement of a single location.

## Award-Winning Technology

The OMEGA iPTX is simple to install and use, and features OMEGA's award-winning **iServer** technology that requires no special software except a Web Browser.

The iPTX connects to an Ethernet Network with a standard RJ45 connector and sends data in standard TCP/IP packets. It is easily configured with a simple menu using a Web Browser and can be password protected.

From within an Ethernet LAN or over the Internet, the user simply types its IP address or an easy to remember name such as "Cleanroom 5" or "Midwest Server Room" in any Web Browser, and the iPTX serves a Web Page with the current readings.

**NIST-Traceable Calibration Certificate available. In compliance with ISO9001:2000, ISO10012-1.1992(E), ANSI/NCSL Z540-1.1994 and MIL-STD-45662A. Order CAL-3-A. See page 89 for details.**

## Typical Applications

The OMEGA iPTX is great for monitoring air (inert gas) pressure and temperature in applications such as: HVAC systems, pharmaceutical and food processing and storage, hospitals, laboratories, semiconductor fabs, electronic assembly, warehousing, manufacturing, greenhouses, farm animal shelters, and many more.

## NEW iPTX-M with Flash Memory and LCD Display

The OMEGA iPTX-M with LCD display adds several valuable features to the backlit local display of temperature and air pressure.

The "memory" model comes complete with a removable 2 MB flash memory card that can store one full year of readings taken at one-minute intervals (or two months of readings taken at 10-second intervals).

Up to 4 years of temperature and pressure readings can be stored on the 8 MB card.

With data being recorded in the built-in non-volatile flash memory, a failure on the Ethernet network will not interrupt the data record.

## Alarm Relays

The OMEGA iPTX-M features two 1.5 A relays. With the easy Web-based setup page, the two relays can be programmed for any combination of temperature or pressure, and high or low setpoints. The relays can also be programmed to remain latched and require a manual reset if a limit is exceeded.

## Email Alarms

In addition to the mechanical alarm relays, all OMEGA iPTX models on a LAN connected to the Internet can trigger an alarm that can be sent by email to a user or a distribution list anywhere in the world, including an Internet-enabled pager or cell phone.



## Battery Backup

The iPTX-M comes with a universal AC adaptor. A standard 9V alkaline battery (also included) allows the device to log data for up to 10 days without external AC power.

In locations without power or network accessibility, the iPTX-M continues logging data to its flash memory. The stored data can later be downloaded over the Ethernet.

OMEGA iServer products are designed and manufactured in the U.S.A.



# ETHERNET MEASUREMENT AND CONTROL DEVICES

## Sensor Specifications Air (Inert Gas) Pressure (P)

**Accuracy/Range:** 0 to 200 psi  $\pm 2.4$  (0 to 14 bar  $\pm 0.2$ )

**Resolution:** 0.006 psi (0.4 mbar)

**Maximum safe pressure:**  
250 psi absolute (17 bar abs)

### TEMPERATURE (T)

**Accuracy:**  $\pm 2^\circ\text{C}$  ( $\pm 3.6^\circ\text{F}$ )

**Range\*:** 0 to  $70^\circ\text{C}$  (32 to  $158^\circ\text{F}$ )

**Response Time:** 5 seconds

**Resolution:**  $0.01^\circ\text{C}$ , 14 bit

### PROBE PHYSICAL DIMENSIONS

**Probe:** 99 L x 19 mm Dia (3.9 x 0.75") assembled

**Pressure Port:** 304 SST,  $\frac{1}{8}$ -27 NPT

**Twist Lock Type Connector:** PTIH-10-6P and PT06F-10-6S

**Cable with DB9 or Stripped Leads:** 3 m (10') long

**Cable Operating Temperature:** 0 to  $105^\circ\text{C}$  (32 to  $221^\circ\text{F}$ )

## iServer Specifications Interfaces

**Ethernet:** 10Base-T (RJ45)

### Supported Protocols:

TCP/IP, UDP/IP, ARP, ICMP, DHCP, DNS, HTTP and Telnet

**Indicators (LEDs):** Network activity, network link, transmit and receive/diagnostics

**Memory:** 512 KB flash, 16 KB SRAM

**Management:** Device configuration and monitoring through embedded Web server

**Software:** Firmware upgradable. Includes an Excel program for automatic data logging within definable time intervals, compatible with all Windows operating systems.

**Embedded Web Server:** Serves Web pages containing real-time data and live updated charts within definable time intervals

### Power Input:

**iPTX-W:** 9 to 12 Vdc  
**iPTX-D:** 10 to 32 Vdc

### Safety Qualified AC Power Adaptor:

**Nominal Output:** 9 Vdc @ 0.5 A  
**Input:** 100 to 240 Vac, 50/60 Hz (included for iPTX-W) Switching power supply sold separately for iPTX-D

**Consumption:** 2.5 W max

\* Extended temperature range is for Industrial probe only, the iServer's operating temperature is 0 to  $70^\circ\text{C}$ .

**Environmental  
Operating Temperature:**  
0 to  $70^\circ\text{C}$  (32 to  $158^\circ\text{F}$ )

### Packaging

#### Material:

**iPTX-W:** Metal case with flange mount

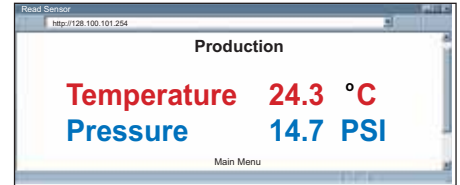
**iPTX-D:** Polycarbonate case with DIN rail mount

#### Weight:

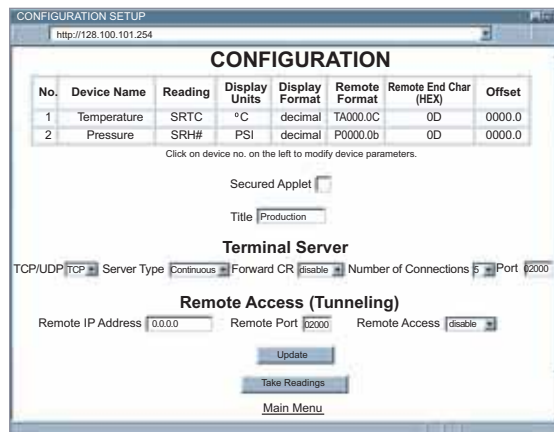
**iPTX-D:** 272 g (0.60 lb)

**iPTX-W:** 363 g (0.80 lb)

**Dimensions:** Refer to Mechanical Specifications page



Reading Sensor Web Page.



iPTX-W and iPTX-D Device Configuration Web Page.

Time	Temp	Pres	BIP	BWP	Error
5/5/2006 5:11:54 PM	75.56	101.600	0.00	32.00	0.00
5/5/2006 5:12:04 PM	75.56	101.600	0.00	32.00	0.00
5/5/2006 5:12:15 PM	75.56	101.500	0.00	32.00	0.00
5/5/2006 5:12:26 PM	75.56	101.600	0.00	32.00	0.00
5/5/2006 5:12:36 PM	75.56	101.600	0.00	32.00	0.00
5/5/2006 5:12:47 PM	75.56	101.600	0.00	32.00	0.00
5/5/2006 5:12:57 PM	75.56	101.600	0.00	32.00	0.00
5/5/2006 5:13:08 PM	75.56	101.600	0.00	32.00	0.00
5/5/2006 5:13:19 PM	75.56	101.600	0.00	32.00	0.00
5/5/2006 5:13:29 PM	75.56	101.700	0.00	32.00	0.00
5/5/2006 5:13:40 PM	75.56	101.600	0.00	32.00	0.00
5/5/2006 5:13:50 PM	75.56	101.600	0.00	32.00	0.00
5/5/2006 5:14:01 PM	75.56	101.600	0.00	32.00	0.00
5/5/2006 5:14:11 PM	75.56	101.700	0.00	32.00	0.00
5/5/2006 5:14:22 PM	75.56	101.600	0.00	32.00	0.00
5/5/2006 5:14:32 PM	75.56	101.600	0.00	32.00	0.00
5/5/2006 5:14:43 PM	75.56	101.700	0.00	32.00	0.00
5/5/2006 5:14:54 PM	75.56	101.700	0.00	32.00	0.00
5/5/2006 5:15:04 PM	75.56	101.600	0.00	32.00	0.00
5/5/2006 5:15:15 PM	75.56	101.600	0.00	32.00	0.00
5/5/2006 5:15:26 PM	75.56	101.600	0.00	32.00	0.00

Data Logging Spreadsheet.

## iDRN-PS-1000

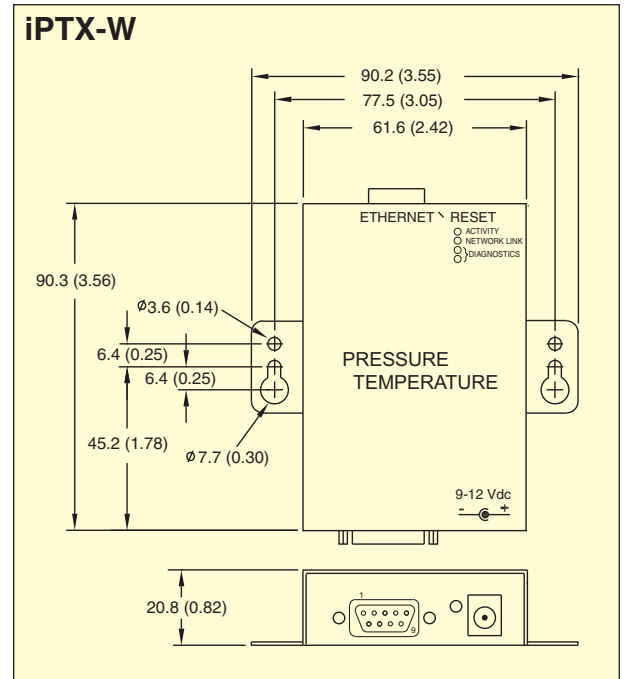
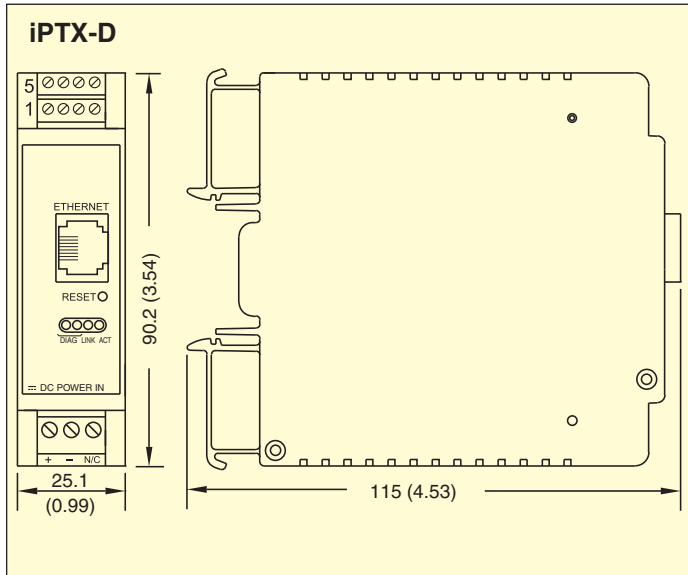
- ✓ 24 Vdc Supply
- ✓ Switching Power Supply Powers up to 7 Units



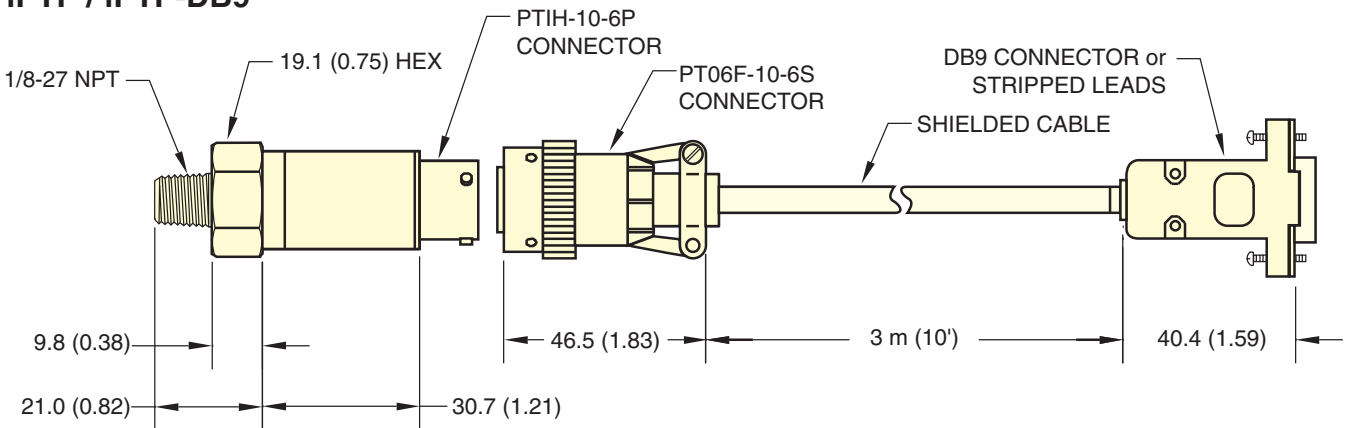
Mounts to 35 mm DIN rails.

## Mechanical Specifications

Dimensions: mm (in)



## iPTP / iPTP-DB9



**AVAILABLE FOR FAST DELIVERY!**

Model No.	Price	Description
<b>iPTX-D</b>	<b>£198</b>	DIN rail iServer industrial MicroServer™ for air (inert gas) pressure (0 to 200 psi) and temperature [includes probe with 3 m (10') cable, stripped wire leads]
<b>iPTX-W</b>	<b>198</b>	iServer MicroServer™ for air (inert gas) pressure (0 to 200 psi) and temperature [includes probe with 3 m (10') cable, DB9 connector and universal (100 to 240 Vac) power adaptor]
<b>Accessories</b>		
<b>iPTP</b>	<b>£67</b>	Replacement probe with 3 m (10') cable, stripped wire leads (for iPTX-D)
<b>iPTP-DB9</b>	<b>84</b>	Replacement probe with 3 m (10') cable, DB9 connector (for iPTX-W)
<b>iDRN-PS-1000</b>	<b>101</b>	Power supply (switching), 95 to 240 Vac input, 24 Vdc output @ 850 mA, powers up to 7 units (for iPTX-D)
<b>CAL-3-A</b>	<b>84</b>	NIST-traceable calibration certificate, 3 pressure points, temp 25°C (for new units)

Comes with air pressure/temperature probe with 3 m (10') cable.

Ordering Example: **iPTX-D** iServer MicroServer™ with industrial air pressure/temperature probe with 3 m (10') cable, **\$295**.





#### UNITED STATES

[www.omega.com](http://www.omega.com)

1-800-TC-OMEGA

Stamford, CT.

#### CANADA

[www.omega.ca](http://www.omega.ca)

Laval(Quebec)

1-800-TC-OMEGA

#### GERMANY

[www.omega.de](http://www.omega.de)

Deckenpfronn, Germany

0800-8266342

#### UNITED KINGDOM

[www.omega.co.uk](http://www.omega.co.uk)

Manchester, England

0800-488-488

#### FRANCE

[www.omega.fr](http://www.omega.fr)

088-466-342

#### CZECH REPUBLIC

[www.omegaeng.cz](http://www.omegaeng.cz)

Karviná, Czech Republic

596-311-899

#### BENELUX

[www.omega.nl](http://www.omega.nl)

0800-099-33-44



## More than 100,000 Products Available!

### • Temperature

Calibrators, Connectors, General Test and Measurement Instruments, Handheld Instruments for Temperature Measurement, Ice Point References, Indicating Labels, Crayons, Cements and Lacquers, Infrared Temperature Measurement Instruments, Recorders, Relative Humidity Measurement Instruments, PT100 Probes, PT100 Elements, Temperature & Process Meters, Timers and Counters, Temperature and Process Controllers and Power Switching Devices, Thermistor Elements, Probes and Assemblies, Thermocouples, Thermowells and Head and Well Assemblies, Transmitters, Thermocouple Wire, RTD Probes

### • Flow and Level

Air Velocity Indicators, Doppler Flowmeters, Level Measurement, Magnetic Flowmeters, Mass Flowmeters, Pitot Tubes, Pumps, Rotameters, Turbine and Paddle Wheel Flowmeters, Ultrasonic Flowmeters, Valves, Variable Area Flowmeters, Vortex Shedding Flowmeters

### • pH and Conductivity

Conductivity Instrumentation, Dissolved Oxygen Instrumentation, Environmental Instrumentation, pH Electrodes and Instruments, Water and Soil Analysis Instrumentation

### • Data Acquisition

Auto-Dialers and Alarm Monitoring Systems, Communication Products and Converters, Data Acquisition and Analysis Software, Data Loggers Plug-in Cards, Signal Conditioners, USB, RS232, RS485 and Parallel Port Data Acquisition Systems, Wireless Transmitters and Receivers

### • Pressure, Strain and Force

Displacement Transducers, Dynamic Measurement Force Sensors, Instrumentation for Pressure and Strain Measurements, Load Cells, Pressure Gauges, Pressure Reference Section, Pressure Switches, Pressure Transducers, Proximity Transducers, Regulators, Pressure Transmitters, Strain Gauges, Torque Transducers, Valves

### • Heaters

Band Heaters, Cartridge Heaters, Circulation Heaters, Comfort Heaters, Controllers, Meters and Switching Devices, Flexible Heaters, General Test and Measurement Instruments, Heater Hook-up Wire, Heating Cable Systems, Immersion Heaters, Process Air and Duct, Heaters, Radiant Heaters, Strip Heaters, Tubular Heaters