

# Windows Software for the OM-CP-Series Data Loggers and OM-CP-RF Series Wireless Transmitters Part of the NOMAD® Family

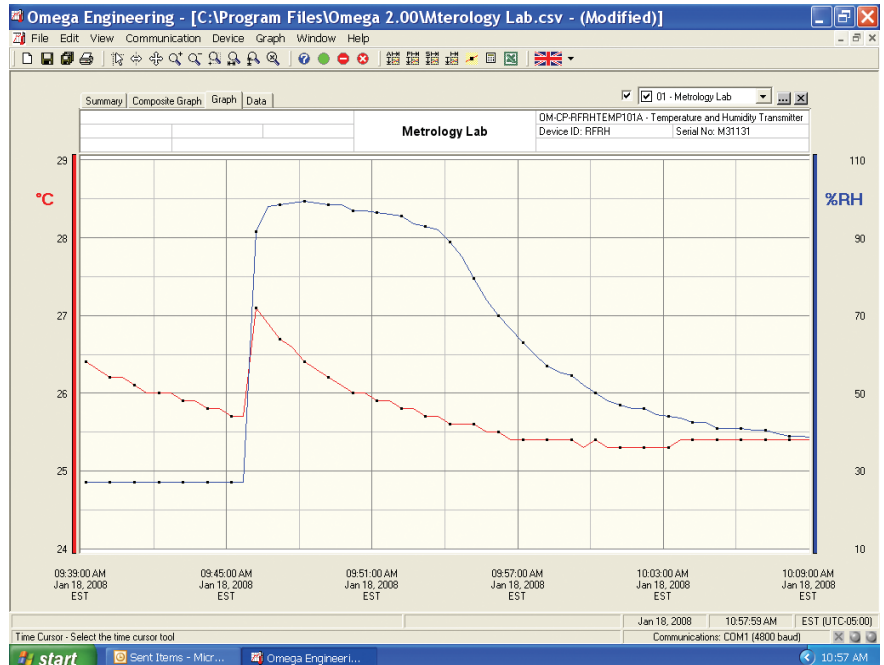
OM-CP-IFC110, OM-CP-IFC200,  
OM-CP-IFC102, OM-CP-RFC101A

Starts at  
**\$99**

- ✓ Real Time Alarm Notification
- ✓ Multiple Data Set Graphing
- ✓ Real-Time Recording
- ✓ Data Exporting
- ✓ Statistics Calculations
- ✓ Graphical Cursor
- ✓ Digital Calibration
- ✓ Automatic Time Synchronization
- ✓ Data Annotation

OMEGA'S data recorder software is an easy-to-use, Windows-based software package allowing the user to collect, display and analyze data effortlessly. A variety of powerful tools allow the user to examine, export and print professional looking reports with just the click of a mouse. Our cutting-edge software is designed for the continuous monitoring and alarming of all Omega's OM-CP Series data loggers and OM-CP-RF Series wireless transmitters. The software can collect and display real-time data from any OM-CP Series logger directly connected to the user's PC, a local area network, or even remotely through the use of Omega's OM-CP-RF Series radio frequency transceivers.

Omega's software offers a real-time alarm notification function which lets the user monitor user-defined alarm limits. Omega's software is ideal for applications when notification of out-of-range conditions is required. Alarm messages can be sent in real-time right to your desktop or sent remotely via email or pager.



Windows software provides a time-based graph of data

It offers a straight-forward, user-friendly tool to provide a complete monitoring and reporting system for all of your needs. Let Omega's software make quality control easy for you. The logical evolution from the existing strip chart recorders, Omega's software allows you to efficiently monitor critical systems continuously without having to leave your desk.

**Alarm Notification:** Omega's software offers a real-time alarm notification function which lets the user monitor user-defined alarm limits. Alarm messages can be sent in real time to your desktop or sent remotely via email or pager. The alarm notification feature is available for the Real Time Chart Recording mode only (the logger must be connected to the PC, and

the PC controls the collection of data). Before starting the recording, the user can select the "Recording Setup" command from the toolbar to set up the alarm limits and type of notification. The real-time alarming feature is available for virtually all of the OM-CP series dataloggers.

The alarm messages can be displayed in a window in the software, the software can send an email to a user-specified address, or it can dial a phone number using the PC modem and leave a numeric message code (e.g. "911"). The OM-CP software real-time alarming functionality is not intended to be used as the sole reporting mechanism in mission-critical applications, or in situations where personal safety may be at risk.

### Overlay Multiple Graphs:

Simultaneously analyze data from several units or deployments; easily switch to a single data series.

### Automatic Time Synchronization:

Automatically aligns and synchronizes data from multiple loggers on a single graph.

**Export to Excel:** The Excel button on toolbar allows simple one click data export to Microsoft Excel. One click of the Excel Icon will automatically open Excel and format the data into a spread sheet. This command will automatically synchronize, in time, data from multiple dataloggers and store the data in an Excel spreadsheet.

**Export Data:** Data may be exported in the following formats:

\*.dat - This is our own internal ASCII data format which can be viewed by most text editing or word processing software.

\*.txt - Files stored in this format contain tab delimited text and can be viewed by most word processing and spreadsheet programs.

\*.csv - Files stored in this format contain comma separated values and are directly readable by Microsoft Excel and many other spreadsheet programs.

**Real-Time Recording:** Collect and display data in real-time while continuing to log.

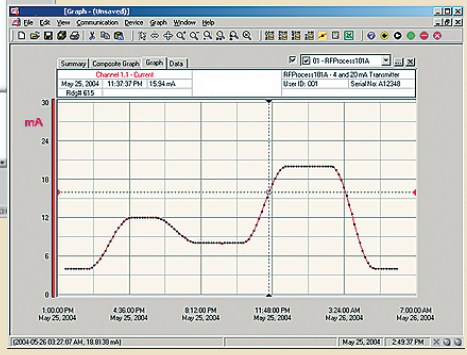
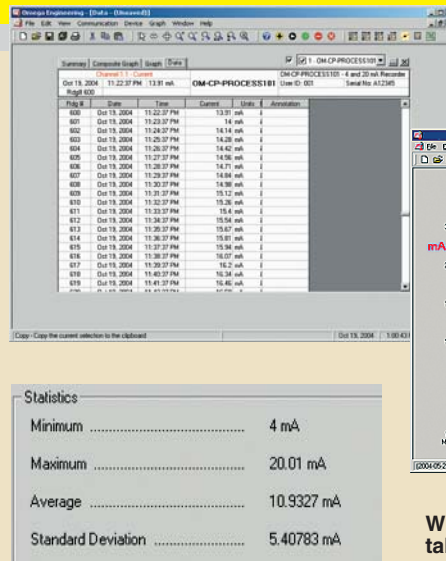
**Statistics:** Automatically calculates averages, minimum, maximum, standard deviation, and mean kinetic temperature.

**Summary:** View statistics and alarm information in a simplified report format.

**Data Table:** Instantly access tabular view for detailed dates, times, values, and annotations

**Zoom:** Magnify data of interest with powerful zoom and drag tools. Supports multiple zoom in and zoom out. Features extended zoom capabilities; box zoom, vertical zoom, and horizontal zoom as well as point and click.

**Formatting Options:** Change colors, line styles, plotting options, show or hide channels in an instant.



Windows software displays data in tabular, graphical and statistical formats

**Scaling Options:** Autoscale function fits data to the screen or allows user to manually enter their own values

**Engineering Units:** Define the type of units to be displayed on the graph using the Engineering Units Wizard. User defined engineering units may be applied to voltage, current, pulse, event and state loggers.

**Menu Accessibility:** Right click on the graph for easy access to all formatting, measurement units and graphing tools menu options.

**Annotation:** Easily annotate specific data points on the graph with a click of the mouse.

**Graphical Cursor:** One click displays readings by time, value, parameter or sample number

**Printing:** Automatically print graphical or tabular data.

**Communications:** Automatically sets up communications port or lets user set configuration.

**Logger Configuration:** Easy set up and launch of dataloggers with immediate or delayed start, preferred sample rate, and device ID.

**Calibration:** Fully digital calibration function automatically stores parameters in device. A calibration Wizard is provided in the software to simplify the calibration procedure.

**Uninterrupted Data Retrieval:** Data may be downloaded from the logger without interrupting the operation of the unit as it continues to log data.

**Software:** WIN98/NT/2000/XP/VISTA 32-bit (VISTA 32-bit version only; VISTA 64-bit is not supported)

**AVAILABLE FOR FAST DELIVERY!**

To Order (Specify Model Number)		
Model No.	Price	Description
OM-CP-IFC110	\$99	Windows software and 1.2 m (4') RS-232 interface cable for all OM-CP Series data loggers except OM-CP-MICRORHTEMP
OM-CP-IFC200	99	Windows software and 3.7 m (12') USB interface cable for all OM-CP Series data loggers except OM-CP-MICRORHTEMP
OM-CP-IFC102	99	Windows software and 1.2 m (4') RS-232 interface cable for OM-CP-MICRORHTEMP data logger
OM-CP-RFC101A	199	Windows software, 1.2 m (4') RS-232 interface cable, receiving antenna and AC adaptor for all OM-CP-RF Series wireless transmitters

Complete operator's manual is included with the OM-CP-IFC110, OM-CP-IFC200, OM-CP-IFC102 and OM-CP-RFC101A Windows software.

Ordering Example: OM-CP-IFC110 Windows software and RS-232 interface cable, \$99.

# omega.co.uk<sup>®</sup>

Your One-Stop Source for Process Measurement and Control!

Freephone 0800 488 488 | International +44(0) 161 777 6622 | Fax +44(0) 161 777 6622 | Sales@omega.co.uk

[www.omega.co.uk](http://www.omega.co.uk)



#### UNITED STATES

[www.omega.com](http://www.omega.com)

1-800-TC-OMEGA  
Stamford, CT.

#### UNITED KINGDOM

[www.omega.co.uk](http://www.omega.co.uk)

Manchester, England  
0800-488-488  
+44-(0)161-777-6611

#### CANADA

[www.omega.ca](http://www.omega.ca)

Laval(Quebec)  
1-800-TC-OMEGA

#### FRANCE

[www.omega.fr](http://www.omega.fr)

0800-466-342

#### GERMANY

[www.omega.de](http://www.omega.de)

Deckenfronn, Germany  
0800-8266342

#### BENELUX

[www.omega.nl](http://www.omega.nl)

0800-099-33-44



## More than 100,000 Products Available!

### • Temperature

Calibrators, Connectors, General Test and Measurement Instruments, Handheld Instruments for Temperature Measurement, Ice Point References, Indicating Labels, Crayons, Cements and Lacquers, Infrared Temperature Measurement Instruments, Recorders, Relative Humidity Measurement Instruments, PT100 Probes, PT100 Elements, Temperature & Process Meters, Timers and Counters, Temperature and Process Controllers and Power Switching Devices, Thermistor Elements, Probes and Assemblies, Thermocouples, Thermowells and Head and Well Assemblies, Transmitters, Thermocouple Wire, RTD Probes

### • Flow and Level

Air Velocity Indicators, Doppler Flowmeters, Level Measurement, Magnetic Flowmeters, Mass Flowmeters, Pitot Tubes, Pumps, Rotameters, Turbine and Paddle Wheel Flowmeters, Ultrasonic Flowmeters, Valves, Variable Area Flowmeters, Vortex Shedding Flowmeters

### • pH and Conductivity

Conductivity Instrumentation, Dissolved Oxygen Instrumentation, Environmental Instrumentation, pH Electrodes and Instruments, Water and Soil Analysis Instrumentation

### • Data Acquisition

Communication Products and Converters, Data Acquisition and Analysis Software, Data Loggers Plug-in Cards, Signal Conditioners, USB, RS232, RS485, Ethernet and Parallel Port Data Acquisition Systems, Wireless Transmitters and Receivers

### • Pressure, Strain and Force

Displacement Transducers, Dynamic Measurement Force Sensors, Instrumentation for Pressure and Strain Measurements, Load Cells, Pressure Gauges, Pressure Reference Section, Pressure Switches, Pressure Transducers, Proximity Transducers, Regulators, Pressure Transmitters, Strain Gauges, Torque Transducers, Valves

### • Heaters

Band Heaters, Cartridge Heaters, Circulation Heaters, Comfort Heaters, Controllers, Meters and Switching Devices, Flexible Heaters, General Test and Measurement Instruments, Heater Hook-up Wire, Heating Cable Systems, Immersion Heaters, Process Air and Duct, Heaters, Radiant Heaters, Strip Heaters, Tubular Heaters